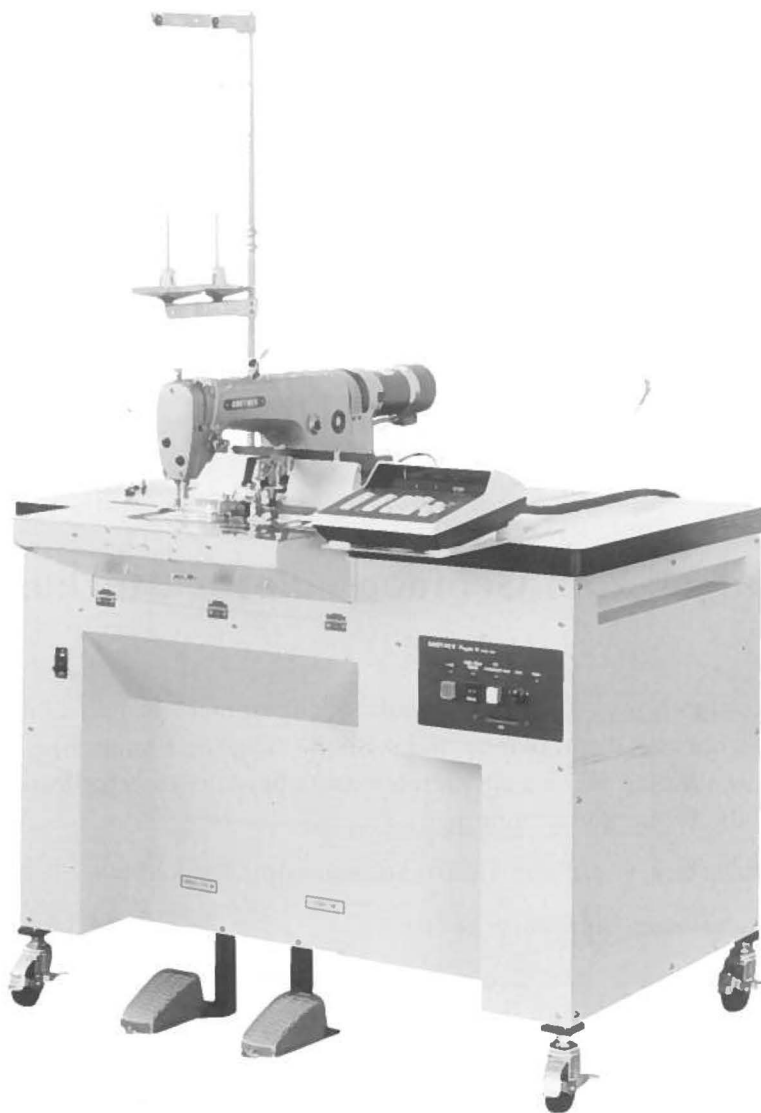


# **PARTS BOOK**

**FOR**

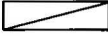
## **BROTHER BAS—301**



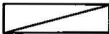
**Programmable Electric Lock Stitch Sewing Machine Profile M**

**BROTHER INDUSTRIES, LTD.**  
**NAGOYA, JAPAN**


## Notes for using this parts book

1. If the symbol  in the "Parts No." column indicates that the part is not available for supply. if, however, there is a number in the "Assembly No." column, the Parts can be ordered as an assembly. Please, therefore, order by using the Assembly No.
  2. This book was prepared based on information available in April, 1980.
  3. Parts are subject to changes in design without prior notice.
  4. Use this parts book together with the one for DB2-B715. Refer to this parts book for the redundant portion.
- \* The machine head used for BAS-301 is DB2-B715, therefore, when checking the parts for B715 head, which will be different depending upon the sub-classes using B715 parts book, please see the column of sub-class -105.


## Anmerkungen zum Gebrauch dieses Stücklistebuches

1. Dieses Zeichen  in der Spalte "Teilnummer" bedeutet, daß dieser Teil nicht lieferbar ist. Wenn jedoch in der Spalte "Gerätesatznummer" eine Nummer steht, kann dieser Teil als ein Geräteteilsatz bestellt werden. Bestellen Sie daher bitte mit dieser Gerätesatznummer.
  2. Dieses Buch basiert auf den Informationen vom April, 1980.
  3. Modelländerungen sind vorbehalten.
  4. Schlagen Sie auch das Teilbuch für DB2-B715 nach. Wenn ein Teil sich überschneidet, schlag man dann in diesem Buch nach.
- \* Was der Nähmaschinenkopf für BAS-301 betrifft, schlagen Sie die Spezifikation -105 von dem Teilbuch für DB2-B715.

## Notes sur l'utilisation de ce manuel de pièces détachées

1. Le symbole  dans la colonne "N° de pièce" signifie que la pièce ne peut être fournie. Si, dans la colonne "N° jeu de pcs", il y a un numéro de nomenclature, la pièce peut être commandée comme faisant partie d'un jeu de pièces. Donc, pour toute commande, veuillez spécifier le n° du jeu de pièces.
  2. Ce manuel a été fait d'après les renseignements valables au mois de Avril 1980.
  3. Les pièces peuvent être sujettes à des modifications sans préavis.
  4. Voyez en confortant avec une livre des pieces détachées de Modele DB2-B715 Et conferez ce livre de pièces détachées sur un endroit repris.
- \* Quand vous voyez le liste des pieces par specification dans une livre des pièces détachées de tête, cherchez BAS-301 comme 105.

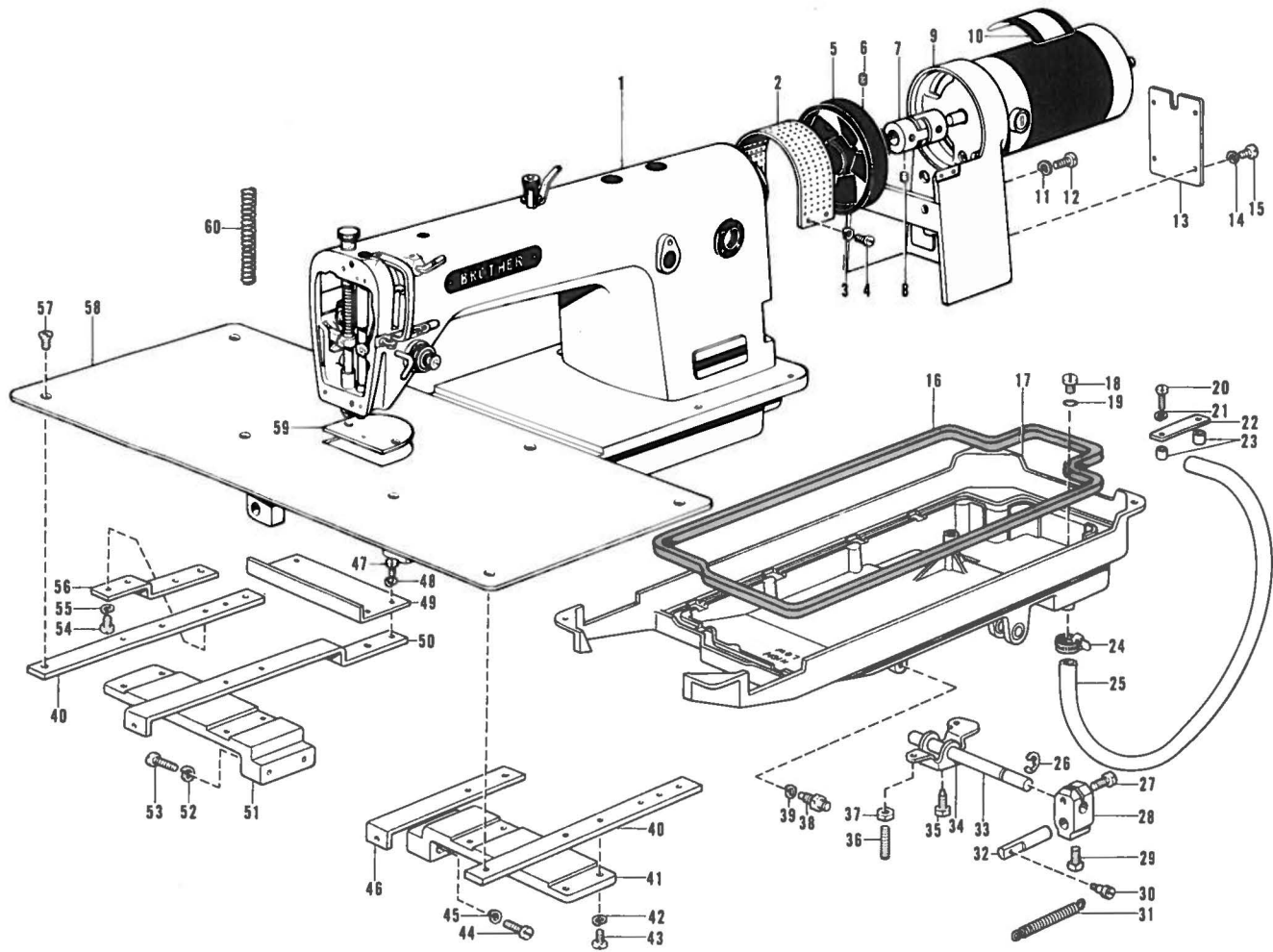
## Notas para usar este Libro de Piezas

1. El símbolo  , que se encuentra en la columna del "Número de Pieza", quiere decir que no se dispone de dicha pieza sola. Cuando, empero, hay un número en la columna del "Número de Juego", se podrá ordenar la pieza con todo el juego. Por lo tanto, será mejor hacer el pedido recurriendo al número del juego respectivo.
  2. Este libro ha sido compilado basándose en los datos de que se disponía en Abril de 1980.
  3. Las piezas quedan sujetas a cambios de diseño sin aviso previo.
  4. Vea también el folleto de piezas del modelo DB2-B715. En cuanto a las partes que se duplican, refiérase a este folleto de piezas.
- \* Cuando usted busca las piezas que difieren según especificaciones en el folleto de piezas del modelo DB2-B715, vea las de la especificación de -105 para BAS-301.

## CONTENTS

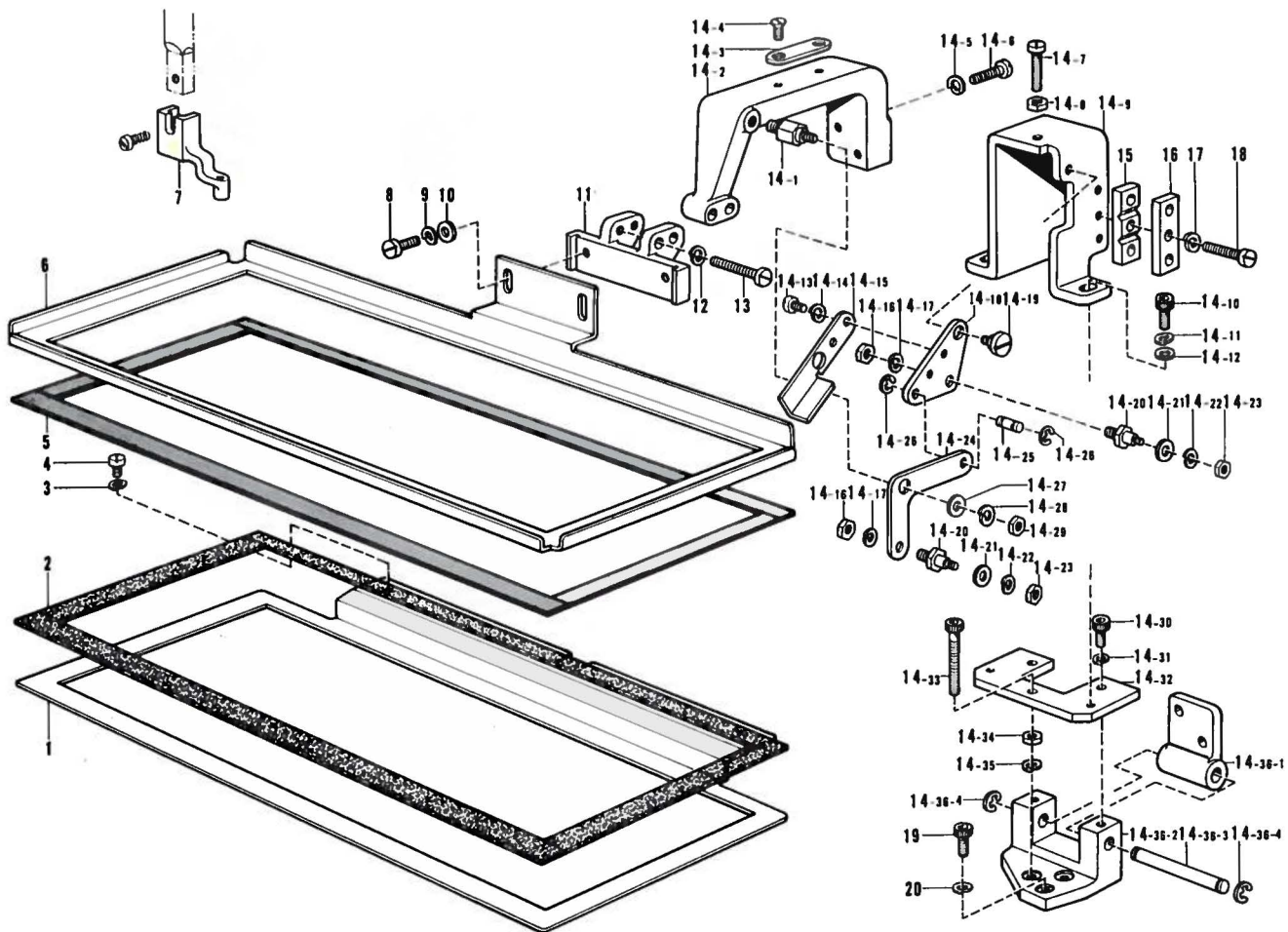
A.	Machine Body · Presser Foot · Knee Lifter and Motor .....	1
B.	Clamp Mechanism (1) .....	2
B.	Clamp Mechanism (2) < Inner Clamp > .....	3
C.	Feed Guide Mechanism .....	4
D.	Feed Mechanism (1) .....	5
D.	Feed Mechanism (2) .....	6
E.	Table Unite (1) .....	7
E.	Table Unite (2) .....	8
F.	Actuator Mechanism .....	9
G.	Power Supply Equipment Mechanism (1) .....	10
G.	Power Supply Equipment Mechanism (2) .....	11
H.	Winder Mechanism .....	12
Z.	Accessories · Accessories Set .....	13
a.	Optional Parts (1) .....	14
a.	Optional Parts (2) .....	15
	INDEX .....	16

# A. Machine Body · Presser Foot · Knee Lifter and Motor



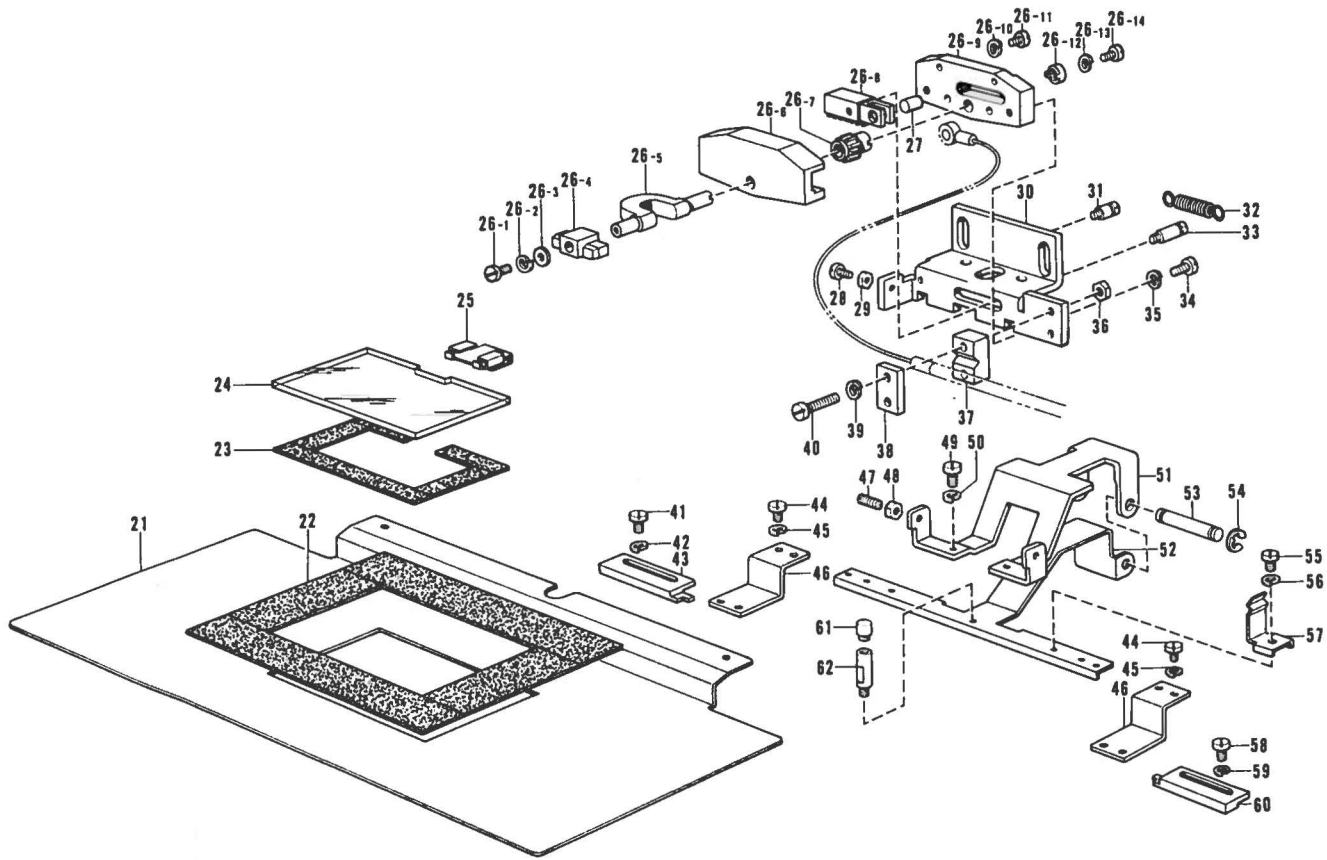
Ref. No.	Name of Parts	Q'ty	Parts No.	Assembly No.	Ref. No.	Name of Parts	Q'ty	Parts No.	Assembly No.
A-1	Arm Bed	1			A-31	Spring	1	152285-0-01	
A-2	Pulley Cover	1			A-32	Piston Drive Link	1	152286-0-01	
A-3	Washer 2-3	4	028030-2-42		A-33	Knee Lifter Shaft	1	146069-0-01	
A-4	Screw 2.6 x 6	4	007260-6-12		A-34	Knee Lifter	1	146037-0-01	
A-5	Pulley	1	152389-0-01		A-35	Bolt 5.95	1	146367-0-01	
A-6	Screw 5 x 12	2	014501-2-22		A-36	Screw 5.95	2	104885-0-01	
A-7	Coupling Assembly	1	152593-0-00		A-37	Nut 5.95	2	100022-0-04	
A-8	Screw 6.35 x 6	4	014770-6-22		A-38	Screw	1	147141-0-01	
A-9	DD Motor Bracket Assembly	1	152383-2-01		A-39	Washer 2 6	1	028060-2-42	
A-10	Label	1			A-40	Plate for Needle Plate	2	152259-1-01	
A-11	Washer 2-6	2	028060-2-42		A-41	Needle Plate Supporter Right	1	152257-0-01	
A-12	Screw 5.95 x 16	2	009761-6-12		A-42	Washer 2 4	8	028040-2-42	
A-13	Motor Bracket Cover	1			A-43	Screw 4 x 10	8	007401-0-12	
A-14	Washer 2-3	4	028030-2-43		A-44	Screw 4.37	2	102424-0-03	
A-15	Screw 3 x 6	4	007300-6-13		A-45	Washer 2 4, 37	2	028680-2-42	
A-16	Packing	1	146040-0-01		A-46	Cover Supporter Plate Right	1	152634-0-01	
A-17	Oil Pan	1	152284-0-00		A-47	Screw 3 x 6	4	007300-6-12	
A-18	Screw 7.94	1	140518-0-01		A-48	Washer 2 3	4	028030-2-42	
A-19	O Ring P7	1	081007-0-70		A-49	Rear Cover	1		
A-20	Screw 3 x 20	2	007302-0-13		A-50	Cover Supporter Plate Left	1	152635-0-01	
A-21	Washer 2-3	2	028030-2-43		A-51	Needle Plate Supporter Left	1	152258-1-01	
A-22	Hose Setting Plate	1	152290-0-01		A-52	Washer 2 4, 37	2	028680-2-42	
A-23	Spacer B	2	152545-0-00		A-53	Screw 4.37	2	102424-0-03	
A-24	Tube Fastener (S)	1			A-54	Screw 4 x 8	2	007400-8-12	
A-25	Drainage Hose	1			A-55	Washer 2 4	2	028040-2-42	
A-26	Stop Ring E10	1	146293-0-01		A-56	Cover Setting Plate	1	152260-0-01	
A-27	Bolt 5.95 x 20	1	017762-0-13		A-57	Screw 4.37	8	100032-0-03	
A-28	Knee Lifter Joint	1	146039-0-01		A-58	Needle Plate SUS	1	152255-0-00	
A-29	Bolt 7.94	1	100463-0-01		A-59	Needle Plate 22	1	152256-0-01	
A-30	Screw	1	152287-0-01		A-60	Spring B	1	152641-0-01	

## B. Clamp Mechanism (1)



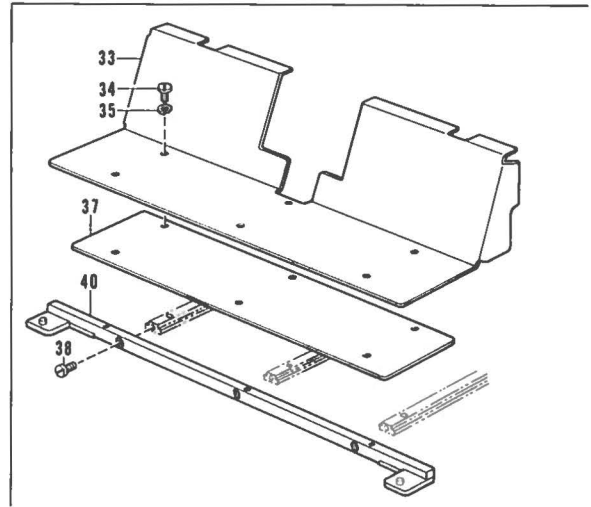
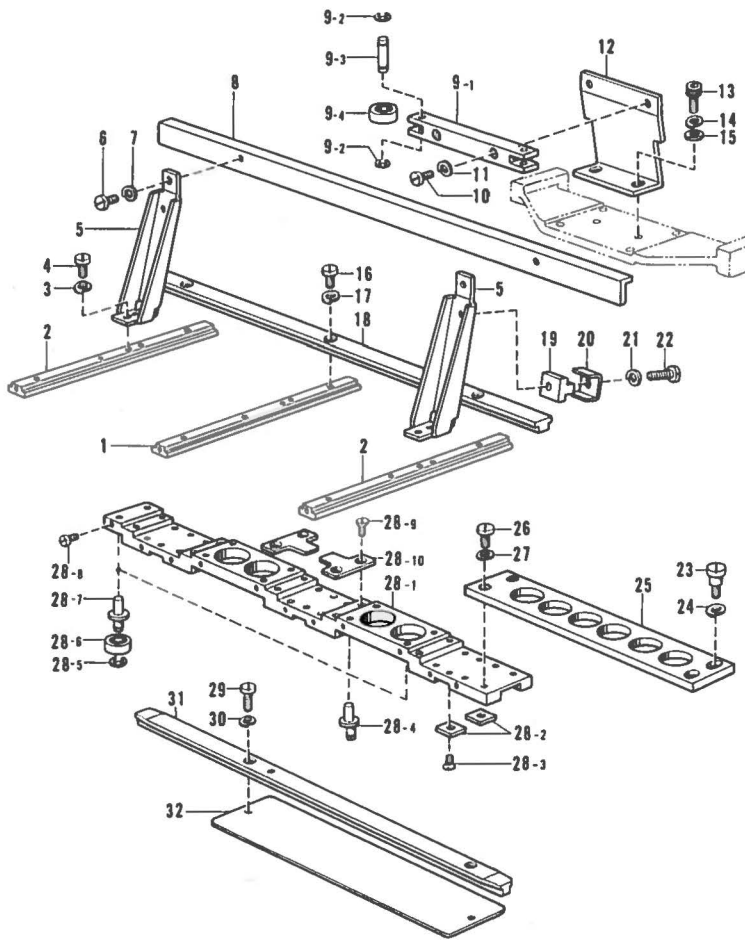
Ref. No.	Name of Parts	Q'ty	Parts No.	Assembly No.	Ref. No.	Name of Parts	Q'ty	Parts No.	Assembly No.
B-1	Feed Plate B-A	1	152282-1-01		B-14-17	Washer 2-4	2	028040-2-43	B-14 Presser Arm Assembly 154131-0-01
B-2	Friction Plate	1			B-14-18	Lever A	1	152268-0-01	
B-3	Washer 2-3	3	028030-2-43		B-14-19	Screw	1	152269-0-01	
B-4	Screw 3 x 8	3	007300-8-03		B-14-20	Screw	2	152277-0-01	
B-5	Presser Plate Cushion	1			B-14-21	Washer 3	2	025030-2-33	
B-6	Presser	1	152280-1-01		B-14-22	Washer 2-3	2	028030-2-43	
B-7	Presser Foot A	1	152283-1-01		B-14-23	Nut 3	2	021300-1-03	
B-8	Screw 4 x 8	2	007400-8-13		B-14-24	Lever B	1	152271-0-01	
B-9	Washer 2-4	2	028040-2-43		B-14-25	Lever Shaft B	1	152272-0-01	
B-10	Washer 4	2	025040-2-33		B-14-26	Stop Ring E3	2	048030-3-42	
B-11	Presser Plate Supporter	1	152274-1-01		B-14-27	Washer 4	1	025040-2-33	
B-12	Washer 2-4	2	028040-2-43		B-14-28	Washer 2-4	1	028040-2-43	
B-13	Screw 4 x 25	2	007402-5-13		B-14-29	Nut 4	1	021400-1-03	
B-14-1	Lever Shaft A	1	152270-0-01		B-14-30	Bolt 4 x 8	2	018400-8-22	
B-14-2	Presser Arm	1	154109-0-01		B-14-31	Washer 2-4	2	028040-2-42	
B-14-3	Stopper Plate	1	154112-0-01		B-14-32	Supporter Plate	1	154110-0-01	
B-14-4	Screw 3 x 8	2	003300-8-12		B-14-33	Bolt 4 x 30	1	018403-0-22	
B-14-5	Washer 2-4	2	028040-2-42		B-14-34	Nut 4	1	021400-1-03	
B-14-6	Screw 4 x 14	2	007401-4-12		B-14-35	Washer 2-4	1	028040-2-43	
B-14-7	Screw 4 x 20	1	007402-0-13		B-14-36-1	Hinge for Presser Arm	1		
B-14-8	Nut 4	1	021400-1-03	B-14 Presser Arm Assembly 154131-0-01	B-14-36-2	Hinge Holder	1		
B-14-9	Presser Lever Holder	1	154111-0-01		B-14-36-3	Hinge Shaft	1	154108-0-01	
B-14-10	Bolt 4 x 10	2	018401-0-22		B-14-36-4	Stop Ring E5	2	048050-3-42	
B-14-11	Washer 2-4	2	028040-2-42		B-15	Wire Holder Lower A	1	152276-1-01	
B-14-12	Washer 4	2	025040-2-32		B-16	Wire Holder Upper A	1	152275-0-01	
B-14-13	Screw 3 x 6	2	007300-6-13		B-17	Washer 2-4	3	028040-2-43	
B-14-14	Washer 2-3	2	028030-2-43		B-18	Screw 4 x 20	3	007402-0-13	
B-14-15	Stopper	1	152273-0-01		B-19	Bolt 4 x 10	2	018401-0-22	
B-14-16	Nut 4	2	021400-1-03		B-20	Washer 2-4	2	028040-2-42	

## B. Clamp Mechanism (2) < Inner Clamp >



Ref. No.	Name of Parts	Q'ty	Parts No.	Assembly No.	Ref. No.	Name of Parts	Q'ty	Parts No.	Assembly No.
B-21	Feed Plate (Reverse type)	1			B-36	Nut 4	2	021400-1-03	
B-22	Friction Plate	1			B-37	Wire Holder Lower C	1	154057-0-01	
B-23	Friction Plate	1			B-38	Wire Holder Upper C	1	154056-0-01	
B-24	Presser Plate	1			B-39	Washer 2-4	2	028040-2-43	
B-25	Presser Plate Supporter	1	154041-1-01		B-40	Screw 4 x 20	2	007402-0-13	
B-26-1	Screw 2.6 x 6	1	007260-6-13		B-41	Screw 3 x 4	2	007300-4-13	
B-26-2	Washer 2-2.6	1	028260-2-43		B-42	Washer 2-3	2	028030-2-43	
B-26-3	Washer 2.6	1	025260-1-33		B-43	Positioning Left	1		
B-26-4	Presser Plate Holder	1	154044-1-01		B-44	Screw 3 x 4	4	007300-4-13	
B-26-5	Presser Crank	1			B-45	Washer 2-3	4	028030-2-43	
B-26-6	Presser Crank Base	1			B-46	Positioning Set Plate	2	154062-0-01	
B-26-7	Pinion Gear	1			B-47	Screw 4 x 8	2	014400-8-22	
B-26-8	Rack Gear	1			B-48	Nut 4	2	001400-1-03	
B-26-9	Presser Crank Plate	1			B-49	Screw 4 x 7	2	007400-7-13	
B-26-10	Washer 2-2.6	4	028260-2-42		B-50	Washer 2-4	2	028040-2-43	
B-26-11	Screw 2.6 x 6	4	007260-6-12		B-51	Positioning Base	1	154058-0-01	
B-26-12	Washer	1	154050-0-01		B-52	Positioning Lever	1	154059-0-01	
B-26-13	Washer 2-2.6	1	028260-2-43		B-53	Positioning Lever Shaft	1	154060-0-01	
B-26-14	Screw 2.6 x 6	1	007260-6-13		B-54	Stop Ring E3	2	048030-3-42	
B-27	Pin	1	154055-0-01		B-55	Screw 3 x 4	2	007300-4-13	
B-28	Screw 3 x 20	1	007302-0-13		B-56	Washer 2-3	2	028030-2-43	
B-29	Nut 3	1	021300-1-03		B-57	Positioning Holder Spring	2	154061-0-01	
B-30	Inner Clamp Holder	1	154051-0-01		B-58	Screw 3 x 4	2	007300-4-13	
B-31	Hook B	1	154053-0-01		B-59	Washer 2-3	2	028030-2-43	
B-32	Spring	1	154054-0-01		B-60	Positioning Right	1		
B-33	Hook A	1	154052-0-01		B-61	Cap	1	154066-0-00	
B-34	Screw 4 x 8	2	007400-8-13		B-62	Positioning Setter Shaft	1	154065-0-01	
B-35	Washer 2-4	2	028040-2-43						

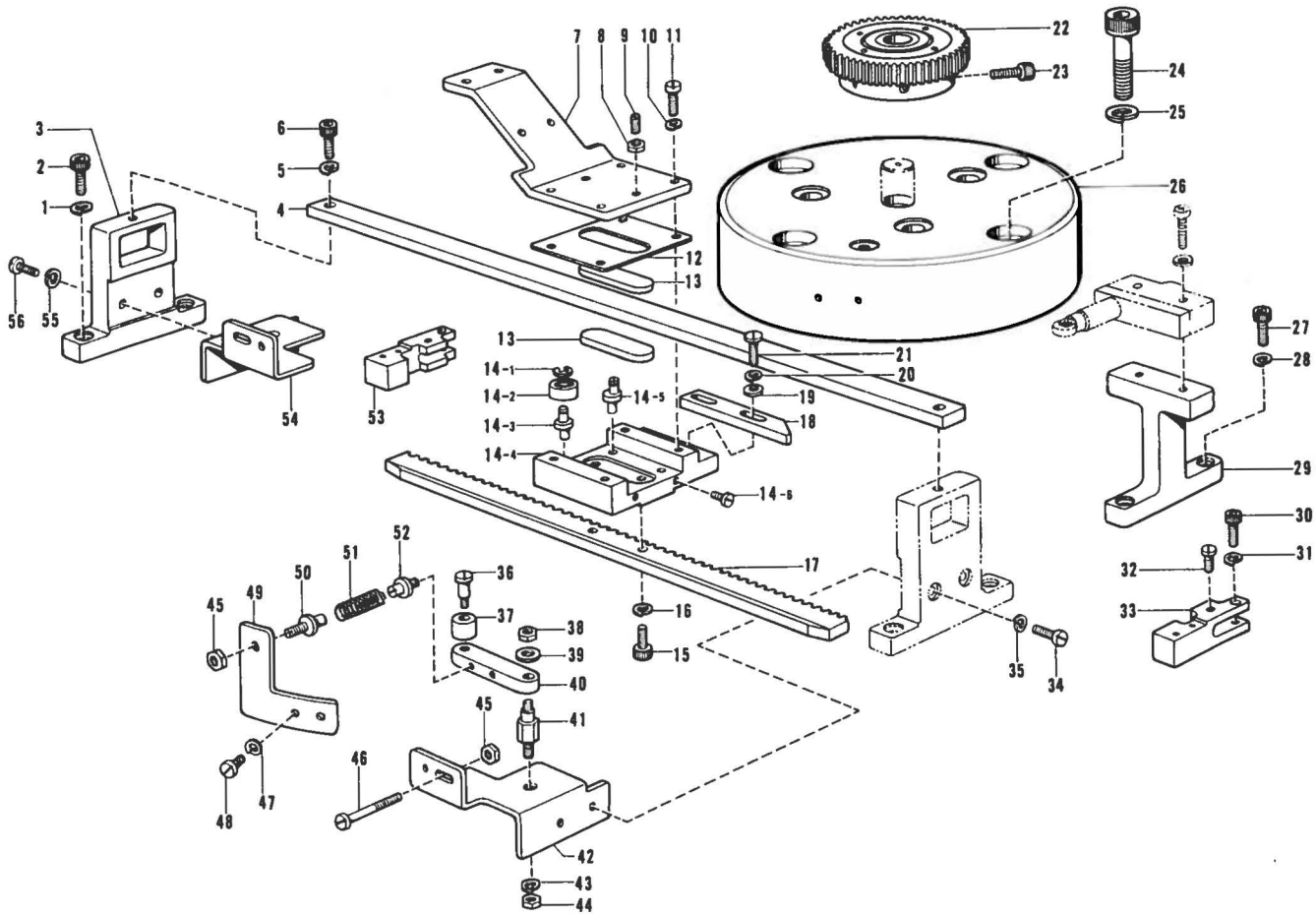
# C. Feed Guide Mechanism



Ref. No.	Name of Parts	Q'ty	Parts No.	Assembly No.	Ref. No.	Name of Parts	Q'ty	Parts No.	Assembly No.
C- 1	Feed Guide Y-A	1	152338-0-01		C-23	Screw	2	154113-0-01	
C- 2	Feed Guide Y-B	2	152339-0-01		C-24	Washer 2-6	2	028060-2-42	
C- 3	Washer 2-4	4	028040-2-43		C-25	Slider Coupling Plate	1	152348-0-01	
C- 4	Screw 4 x 8	4	007400-8-13		C-26	Screw 4 x 8	2	007400-8-13	
C- 5	Support Guide Holder	2	152349-1-01		C-27	Washer 2-4	2	028040-2-43	
C- 6	Screw 4 x 8	2	007400-8-13		C-28- 1	Slider	1		
C- 7	Washer 2-4	2	028040-2-43		C-28- 2	Slider Guide B	6	152345-0-01	
C- 8	Feed Support Guide	1	152350-1-01		C-28- 3	Screw 3 x 6	6	003300-6-04	
C- 9- 1	Roller Shaft Holder B	1		C- 9	Roller Shaft Hold B Assembly	20	152334-0-01	C-28	Slider Assembly
C- 9- 2	Stop Ring E2	4	048020-3-42	152671-0-01	C-28- 4	Eccentric Roller Shaft B	22	048020-3-42	152670-0-01
C- 9- 3	Roller Shaft D	2	152353-0-01		C-28- 5	Stop Ring E2	22	152299-0-00	
C- 9- 4	Bearing	2	152299-0-00		C-28- 6	Bearing	2	152333-0-01	
C-10	Screw 4 x 10	2	007401-0-12		C-28- 7	Roller Shaft B	22	007300-4-12	
C-11	Washer 2-4	2	028040-2-42		C-28- 8	Screw 3 x 4	10	003300-6-14	
C-12	Roller Shaft Holder Supporter	1	152351-1-01		C-28- 9	Screw 3 x 6	5	152344-0-01	
C-13	Bolt 4 x 10	2	018401-0-22		C-28-10	Slider Guide A	2		
C-14	Washer 2-4	2	028040-2-42		C-29	Screw 3.57 x 12	2	007671-2-12	
C-15	Washer 4	2	025040-2-32		C-30	Washer 2-3.5	2	028350-2-42	
C-16	Screw 4 x 8	3	007400-8-12		C-31	Base Plate for Feed Guide	1	152346-1-01	
C-17	Washer 2-4	3	028040-2-42		C-32	Plate	1		
C-18	Feed Guide X	1	152340-1-01		C-33	Feed Guide Cover A	1	152355-1-01	
C-19	Wire Holder A	1	152643-0-01		C-34	Screw 3 x 6	6	007300-6-13	
C-20	Wire Holder B	1	152644-0-01		C-35	Washer 2-3	6	028030-2-43	
C-21	Washer 2-4	1	028040-2-42		C-37	Plate for A	1	154023-0-00	
C-22	Bolt 4 x 16	1	018401-6-22		C-38	Screw	3	154070-0-01	
					C-40	Front Plate A	1	152342-1-01	

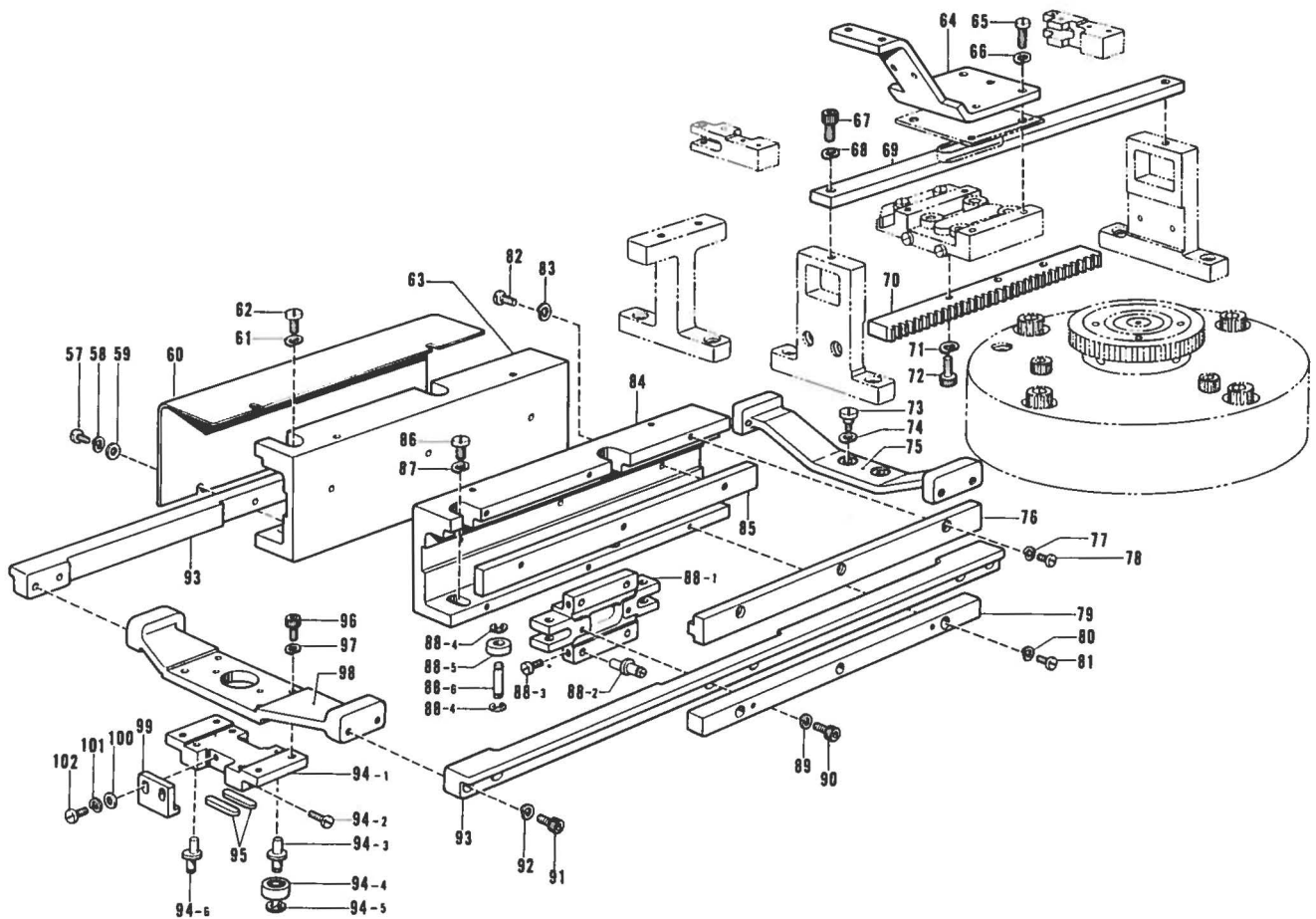


## D. Feed Mechanism (1)



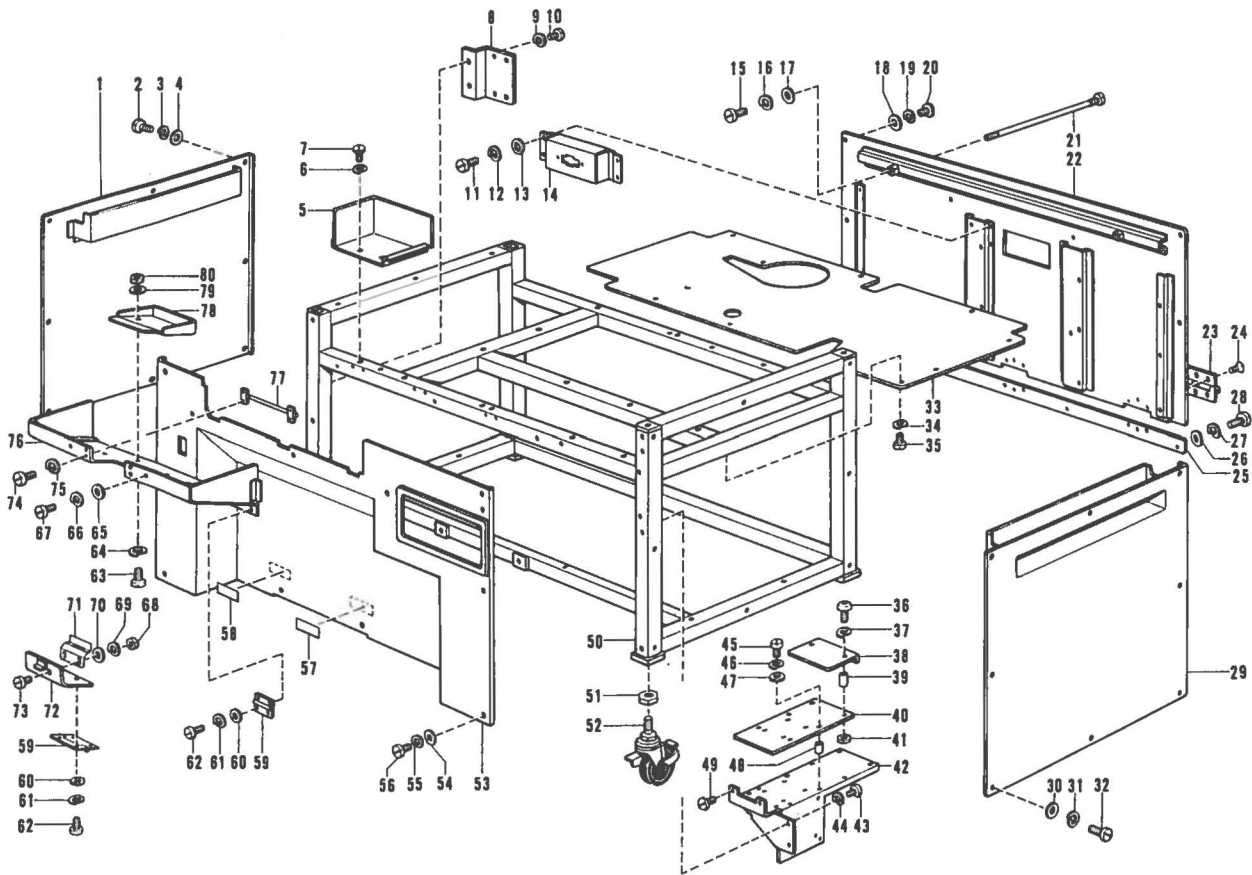
Ref. No.	Name of Parts	Q'ty	Parts No.	Assembly No.	Ref. No.	Name of Parts	Q'ty	Parts No.	Assembly No.
D- 1	Washer 2-5	8	028050-2-42		D-27	Bolt 5 x 16	4	018501-6-22	
D- 2	Bolt 5 x 16	8	018501-6-22		D-28	Washer 2-5	4	028050-2-42	
D- 3	Bracket Guider Base	4			D-29	O-Position Limit Supporter	2		
D- 4	Bracket Guider X	1	152296-0-01		D-30	Bolt 4 x 16	4	018401-6-22	
D- 5	Washer 2-5	2	028050-2-42		D-31	Washer 2-4	4	028040-2-42	
D- 6	Bolt 5 x 12	2	018501-2-22		D-32	Screw 4 x 8	4	007400-8-12	
D- 7	Coupling Plate X	1	152303-1-01		D-33	Bracket Stopper B	2		
D- 8	Nut 4	4	021400-1-03		D-34	Screw 4 x 14	2	007401-4-12	
D- 9	Screw 4 x 8	4	014400-8-22		D-35	Washer 2-4	2	028040-2-42	
D-10	Washer 2-4	4	028040-2-43		D-36	Guide Roller Shaft	4	152313-0-01	
D-11	Screw 4 x 14	4	007401-4-13		D-37	Guide Roller	4	152312-0-01	
D-12	Spacer	2	152611-0-00		D-38	Nut 4	4	021400-1-03	
D-13	Slide Plate A	4	152305-0-00		D-39	Washer	4	152311-0-01	
D-14- 1	Stop Ring E2	8	048020-3-42		D-40	Guide Plate	4	152310-0-01	
D-14- 2	Bearing	8	152299-0-00		D-41	Guide Shaft	4	152309-0-01	
D-14- 3	Roller Shaft A	4	152300-0-01	D-14 Bracket Assembly 152652-0-01	D-42	Spring Guide Plate R	1		
D-14- 4	Bracket	2			D-43	Washer 2-6	2	028060-2-42	
D-14- 5	Eccentric Roller Shaft A	4	152301-0-01		D-44	Nut 6	2	021060-1-02	
D-14- 6	Screw 3 x 8	8	007300-8-03		D-45	Nut 4	6	021400-1-03	
D-15	Bolt 5 x 12	2	018501-2-22		D-46	Screw 4 x 35	2	007403-5-12	
D-16	Washer 2-5	2	028050-2-42		D-47	Washer 2-4	4	028040-2-42	
D-17	Rack Gear X	1	152307-0-00		D-48	Screw 4 x 10	4	007401-0-12	
D-18	O-Position Dog	2	152302-0-01		D-49	Spring Guide Plate M	2		
D-19	Washer 4	4	025040-2-32		D-50	Spring Guider A	4	152314-0-01	
D-20	Washer 2-4	4	028040-2-42		D-51	Spring	4	152316-0-01	
D-21	Screw 4 x 14	4	007401-4-12		D-52	Spring Guider B	4	152315-0-01	
D-22	Driving Gear Assembly	2	154094-0-01		D-53	Bracket Stopper A	2		
D-23	Bolt 5 x 16	4	018501-6-22		D-54	Spring Guide Plate L	1		
D-24	Bolt 10 x 50	8	018105-0-22		D-55	Washer 2-4	2	028040-2-42	
D-25	Washer 2-10	8	028100-2-42		D-56	Screw 4 x 14	2	007401-4-12	
D-26	Motor Bracket	2	152291-1-01						

## D. Feed Mechanism (2)



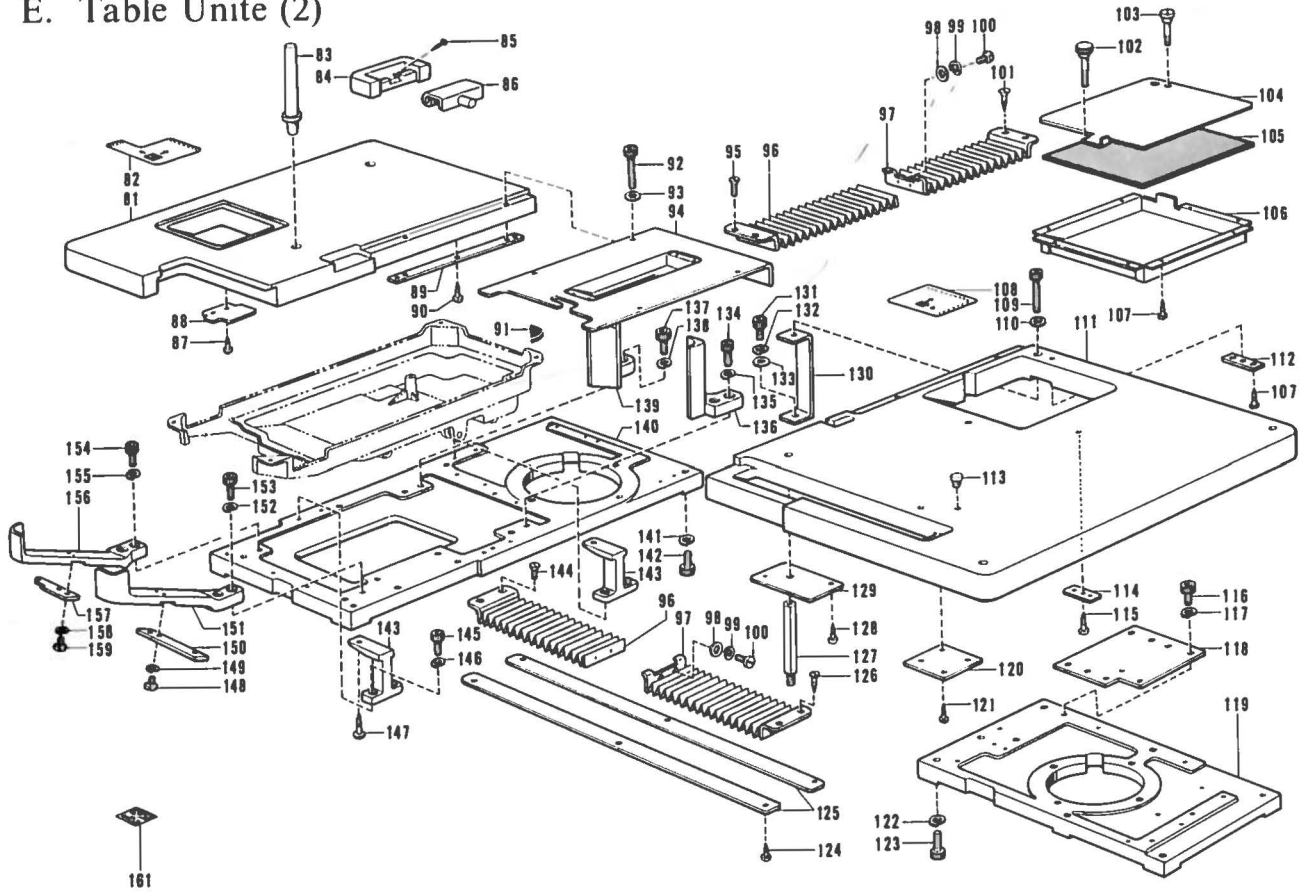
Ref. No.	Name of Parts	Q'ty	Parts No.	Assembly No.	Ref. No.	Name of Parts	Q'ty	Parts No.	Assembly No.
D-57	Screw 3 x 6	8	007300-6-12		D-85	Roller Guide Side	2		
D-58	Washer 2-3	8	028030-2-42		D-86	Screw 4.37 x 10	2	009681-0-12	
D-59	Washer 3	8	025030-2-32		D-87	Washer 2-4.37	2	028680-2-42	
D-60	Cover	2			D-88-1	Roller Shaft Holder A	2		
D-61	Washer 2-4.37	2	028680-2-42		D-88-2	Eccentric Roller Shaft C	8	152326-0-01	D-88 Roller Shaft Hold A Assembly 154008-0-01
D-62	Screw 4.37 x 10	2	009681-0-12		D-88-3	Screw 3 x 6	8	007300-6-12	
D-63	Roller Guide Base (L)	1			D-88-4	Stop Ring E4	16	048040-3-42	
D-64	Coupling Plate Y	1	152304-1-01		D-88-5	Bearing	12	152327-0-00	
D-65	Screw 4 x 14	4	007401-4-13		D-88-6	Roller Shaft C	4	152642-0-01	
D-66	Washer 2-4	4	028040-2-43		D-89	Washer 2-4	4	028040-2-42	
D-67	Bolt 5 x 12	2	018501-2-22		D-90	Bolt 4 x 12	4	018401-2-22	
D-68	Washer 2-5	2	028050-2-42		D-91	Bolt 4 x 12	8	018401-2-22	
D-69	Bracket Guider Y	1	152297-0-01		D-92	Washer 2-4	8	028040-2-42	
D-70	Rack Gear Y	1	152308-1-00		D-93	Feed Coupling Plate	2		
D-71	Washer 2-5	2	028050-2-42		D-94-1	Feed Guide Base	1		
D-72	Bolt 5 x 12	2	018501-2-22		D-94-2	Screw 3 x 8	4	007300-8-03	D-94 Feed Guide Base Assembly 152673-0-01
D-73	Screw	2	154113-0-01		D-94-3	Roller Shaft B	2	152333-0-01	
D-74	Washer 2-6	2	028060-2-42		D-94-4	Bearing	4	152299-0-00	
D-75	Guide Base Holder (R)	1			D-94-5	Stop Ring E2	4	048020-3-42	
D-76	Roller Guide Upper	2			D-94-6	Eccentric Roller Shaft B	2	152334-0-01	
D-77	Washer 2-3	6	028030-2-42		D-95	Slide Plate B	2	152335-0-00	
D-78	Screw 3 x 10	6	007301-0-12		D-96	Bolt 4 x 10	4	018401-0-22	
D-79	Roller Guide Lower	2			D-97	Washer 2-4	4	028040-2-42	
D-80	Washer 2-3	6	028030-2-42		D-98	Guide Base Holder (F)	1		
D-81	Screw 3 x 10	6	007301-0-12		D-99	Guide Plate for Feed Guide Base	2	152336-0-01	
D-82	Screw 3 x 10	6	007301-0-12		D-100	Washer 3	4	025030-2-32	
D-83	Washer 2-3	6	028030-2-42		D-101	Washer 2-3	4	028030-2-42	
D-84	Roller Guide Base (R)	1			D-102	Screw 3 x 10	4	007301-0-12	

# E. Table Unite (1)



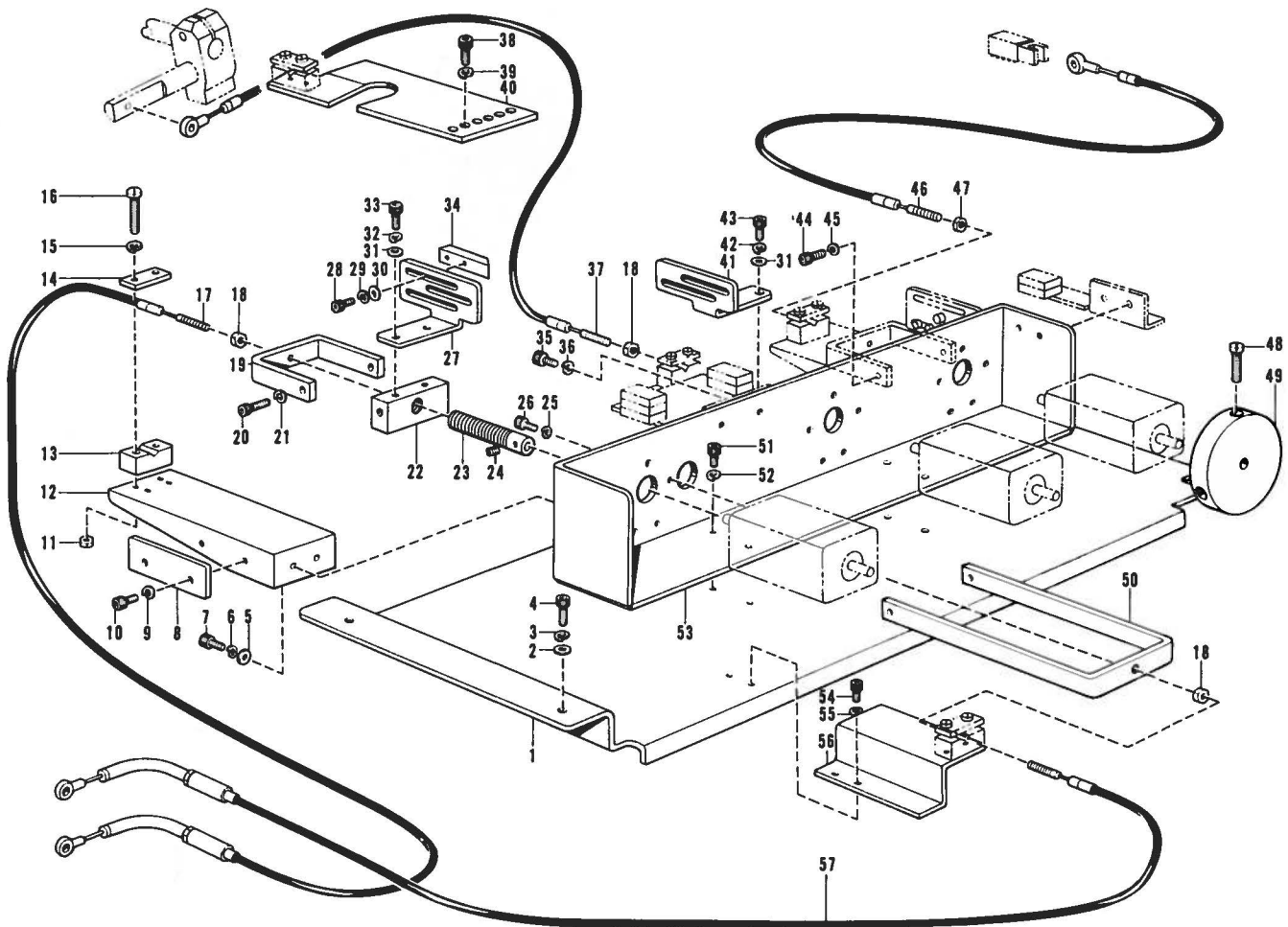
Ref. No.	Name of Parts	Q'ty	Parts No.	Assembly No.	Ref. No.	Name of Parts	Q'ty	Parts No.	Assembly No.
E-1	Side Cover Left	1			E-41	Nut 3	2	021300-1-03	
E-2	Screw 4 x 8	8	007400-8-13		E-42	Card Reader Setting Base	1		
E-3	Washer 2-4	8	028040-2-43		E-43	Screw 4 x 10	2	002401-0-03	
E-4	Washer 4	8	025040-2-33		E-44	Washer 2-4	2	028040-2-43	
E-5	Table Cover	1			E-45	Screw 3 x 20	4	007302-0-13	
E-6	Washer 2-4	2	028040-2-42		E-46	Washer 2-3	4	028030-2-43	
E-7	Screw 4 x 8	2	007400-8-12		E-47	Washer 3	4	025030-2-33	
E-8	Switch Setting Board	1			E-48	Spacer A	4	152544-0-00	
E-9	Washer 2-4	2	028040-2-42		E-49	Screw 3 x 6	2	007300-6-12	
E-10	Screw 4 x 10	2	007401-0-12		E-50	Stand	1		
E-11	Screw 4 x 6	4	007400-6-13		E-51	Nut 16	4	021160-3-03	
E-12	Washer 2-4	4	028040-2-43		E-52	Caster	4	152393-0-00	
E-13	Washer 4	4	025040-2-33		E-53	Front Cover	1		
E-14	Connector Setting Plate	1			E-54	Washer 4	10	025040-2-33	
E-15	Screw 4 x 10	2	007401-0-12		E-55	Washer 2-4	10	028040-2-43	
E-16	Washer 2-4	2	028040-2-42		E-56	Screw 4 x 8	10	007400-8-13	
E-17	Washer	2	152584-0-01		E-57	Label	1		
E-18	Washer 4	6	025040-2-33		E-58	Label	1		
E-19	Washer 2-4	6	028040-2-43		E-59	Hook Cover Hinge	4	152423-0-00	
E-20	Screw 4 x 8	6	007400-8-13		E-60	Washer 3	16	025030-2-33	
E-21	Screw	2	152418-0-01		E-61	Washer 2-3	16	028030-2-43	
E-22	Rear Cover Assembly	1			E-62	Screw 3 x 6	16	007300-6-13	
E-23	Hinge	3	152575-0-00		E-63	Screw 3 x 8	2	007300-8-03	
E-24	Screw 4 x 8	18	003400-8-04		E-64	Washer 2-3	2	028030-2-43	
E-25	Rear Cover Plate	1			E-65	Washer 4	4	025040-2-33	
E-26	Washer 4	4	025040-2-33		E-66	Washer 2-4	4	028040-2-43	
E-27	Washer 2-4	4	028040-2-43		E-67	Screw 4 x 8	4	007400-8-13	
E-28	Screw 4 x 8	4	007400-8-13		E-68	Nut 3	2	021300-1-03	
E-29	Side Cover Right	1			E-69	Washer 2-3	2	028030-2-43	
E-30	Washer 4	8	025040-2-33		E-70	Washer 3	2	025030-2-33	
E-31	Washer 2-4	8	028040-2-43		E-71	Plate Spring	1		
E-32	Screw 4 x 8	8	007400-8-13		E-72	Rotary Hook Cover	1		
E-33	Cover	11			E-73	Screw 3 x 8	2	007300-8-03	
E-34	Washer 2-4	11	028040-2-42		E-74	Screw 4 x 6	4	007400-6-13	
E-35	Screw 4 x 10	11	007401-0-12		E-75	Washer 2-4	4	028040-2-43	
E-36	Screw 3 x 30	2	002303-0-06		E-76	Rotary Hook Cover	1		
E-37	Washer 2-3	2	028030-2-43		E-77	Cover Stopper	1		
E-38	Card Reader Plate	1			E-78	Oil Receiver	1		
E-39	Spacer	2	154034-0-00		E-79	Washer 3	2	025030-2-33	
E-40	Card Reader Setting Plate	1	154097-0-00		E-80	Nut 3	2	021300-1-03	

# E. Table Unit (2)



Ref. No.	Name of Parts	Q'ty	Parts No.	Assembly No.	Ref. No.	Name of Parts	Q'ty	Parts No.	Assembly No.
E- 81	Table Left	1			E-122	Washer 2-10	6	028100-2-42	
E- 82	Label Left	1			E-123	Bolt 10 x 20	6	018102-0-22	
E- 83	Head Rest	1	154004-0-01		E-124	Screw 3.1 x 13	6	031311-3-02	
E- 84	Rubber Hinge	1	143910-0-01		E-125	Bellow Plate	2		
E- 85	Nail	2	109714-0-00		E-126	Screw 3.1 x 13	2	033311-3-02	
E- 86	Head Hinge	1	143882-0-01		E-127	Table Supporting Bar	1		
E- 87	Screw 3.1 x 13	2	031311-3-02		E-128	Screw 3.1 x 13	2	031311-3-02	
E- 88	Table Left Cover	1			E-129	Plate	1		
E- 89	Table (C) Supporting Plate	2			E-130	Table Supporting Plate	1		
E- 90	Screw 3.1 x 13	6	031311-3-02		E-131	Bolt 5 x 12	1	018501-2-22	
E- 91	Cushion	4			E-132	Washer 2-5	1	028050-2-42	
E- 92	Bolt 4 x 45	4	018404-5-22		E-133	Washer 5	1	025050-2-32	
E- 93	Washer 4	4	025040-2-32		E-134	Bolt 10 x 30	2	018103-0-22	
E- 94	Table Center	1			E-135	Washer 2-10	2	028100-2-42	
E- 95	Screw 3 x 8	2	003300-8-12		E-136	Arm bed Supporter BR	1		
E- 96	Bellow B	2	152581-0-01		E-137	Bolt 10 x 30	2	018103-0-22	
E- 97	Bellow A	2	152580-0-01		E-138	Washer 2-10	2	028100-2-42	
E- 98	Washer 3	4	025030-2-32		E-139	Arm bed Supporter BL	1		
E- 99	Washer 2-3	4	028030-2-42		E-140	Base B	1		
E-100	Screw 3 x 12	4	007301-2-12		E-141	Washer 2-10	6	028100-2-42	
E-101	Screw 3.1 x 13	2	003300-8-12		E-142	Bolt 10 x 20	6	018102-0-22	
E-102	Screw	1	152590-0-01		E-143	Table Holder	2		
E-103	Table Hinge	1	152589-0-01		E-144	Screw 3 x 8	2	033311-3-02	
E-104	Keeping Box Cover	1			E-145	Bolt 5 x 16	4	018501-6-22	
E-105	Keeping Box Cushion	1			E-146	Washer 2-5	4	028050-2-42	
E-106	Keeping Box	1			E-147	Screw 4.5 x 25	5	031452-5-02	
E-107	Screw 3.1 x 13	12	031311-3-02		E-148	Screw 4 x 10	2	007401-0-12	
E-108	Label Right	1			E-149	Washer 2-4	2	028040-2-42	
E-109	Bolt 4 x 45	4	018404-5-22		E-150	Hook Cover Supporting Plate B	1		
E-110	Washer 4	4	025040-2-32		E-151	Arm bed Supporter FR	1		
E-111	Table Right	1			E-152	Washer 2-10	2	028100-2-42	
E-112	Stopper Fixing Plate	2			E-153	Bolt 10 x 30	2	018103-0-22	
E-113	Oil Cap	3	111865-0-01		E-154	Bolt 10 x 30	2	018103-0-22	
E-114	Stopper Fixing Plate	1			E-155	Washer 2-10	2	028100-2-42	
E-115	Screw 3.1 x 13	2	031311-3-02		E-156	Arm bed Supporter FL	1		
E-116	Bolt 10 x 20	4	018102-0-22		E-157	Hook Cover Supporting Plate A	1		
E-117	Washer 2-10	4	028100-2-42		E-158	Washer 2-4	2	028040-2-42	
E-118	Base Coupling Plate	1			E-159	Screw 4 x 10	2	007401-0-12	
E-119	Base A	1			E-161	Encoder Label	1		
E-120	Hinge Fixing Plate	1							
E-121	Screw 3.1 x 13	2	031311-3-02						

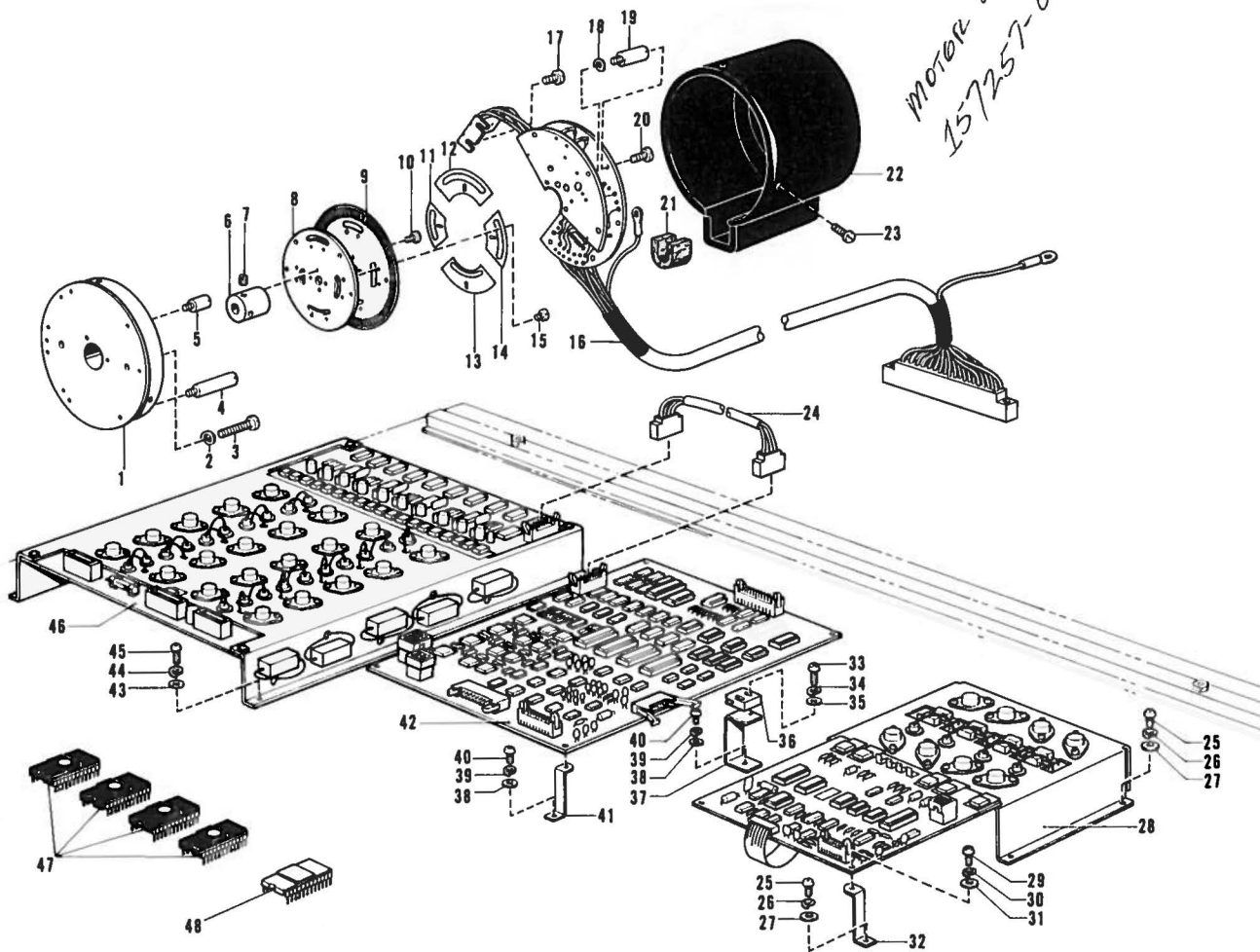
## F. Actuator Mechanism



Ref. No.	Name of Parts	Q'ty	Parts No.	Assembly No.	Ref. No.	Name of Parts	Q'ty	Parts No.	Assembly No.
F- 1	Actuator Base	1			F-30	Washer 3	12	025030-2-32	
F- 2	Washer 5	4	025050-2-32		F-31	Washer 4	6	025040-2-32	
F- 3	Washer 2-5	4	028050-2-42		F-32	Washer 2-4	4	028040-2-42	
F- 4	Bolt 5 x 12	4	018501-2-22		F-33	Bolt 4 x 10	4	018401-0-22	
F- 5	Washer 4	6	025040-2-32		F-34	Dog	6	152375-0-01	
F- 6	Washer 2-4	6	028040-2-42		F-35	Bolt 4 x 8	4	018400-8-22	
F- 7	Bolt 4 x 8	6	018400-8-22		F-36	Washer 2-4	4	028040-2-42	
F- 8	Block Guide Plate	3			F-37	Wire C	1	152380-0-01	
F- 9	Washer 2-4	6	028040-2-42		F-38	Bolt 5 x 12	2	018501-2-22	
F-10	Bolt 4 x 8	6	018400-8-22		F-39	Washer 2-5	2	028050-2-42	
F-11	Nut 4	10	021400-1-03		F-40	Wire Holder Plate	1		
F-12	Block Guide Base	3			F-41	Dog Supporting Plate B	1	152374-0-01	
F-13	Wire Holder Lower B	5	152382-1-01		F-42	Washer 2-4	2	028040-2-42	
F-14	Wire Holder Upper B	5	152381-1-01		F-43	Bolt 4 x 10	2	018401-0-22	
F-15	Washer 2-4	10	028040-2-42		F-44	Bolt 4 x 12	4	018401-2-22	
F-16	Screw 4 x 25	10	007402-5-12		F-45	Washer 2-4	4	028040-2-42	
F-17	Wire A	1	152378-0-01		F-46	Wire D	1	154067-0-01	
F-18	Nut 4	3	021400-1-03		F-47	Nut 4	1	021400-1-03	
F-19	Wire Driving Plate A	3	152371-0-01		F-48	Screw 3 x 20	2	007302-0-13	
F-20	Bolt 4 x 16	2	018401-6-22		F-49	Pulley	1	154090-0-01	
F-21	Washer 2-4	2	028040-2-42		F-50	Wire Driving Plate B	1	152372-0-01	
F-22	Wire Driving Block	3	152370-0-00		F-51	Bolt 4 x 8	4	018400-8-22	
F-23	Screw	3	152369-0-01		F-52	Washer 2-4	4	028040-2-42	
F-24	Screw 4 x 5	6	014400-5-22		F-53	Motor Supporter	1		
F-25	Washer 2-3	9	028030-2-42		F-54	Bolt 4 x 8	2	018400-8-22	
F-26	Bolt 3 x 8	9	018300-8-22		F-55	Washer 2-4	2	028040-2-42	
F-27	Dog Supporting Plate A	2	154124-0-01		F-56	Wire Holder Base	1		
F-28	Bolt 3 x 8	12	018300-8-22		F-57	Wire B	1	152379-0-01	
F-29	Washer 2-3	12	028030-2-42						

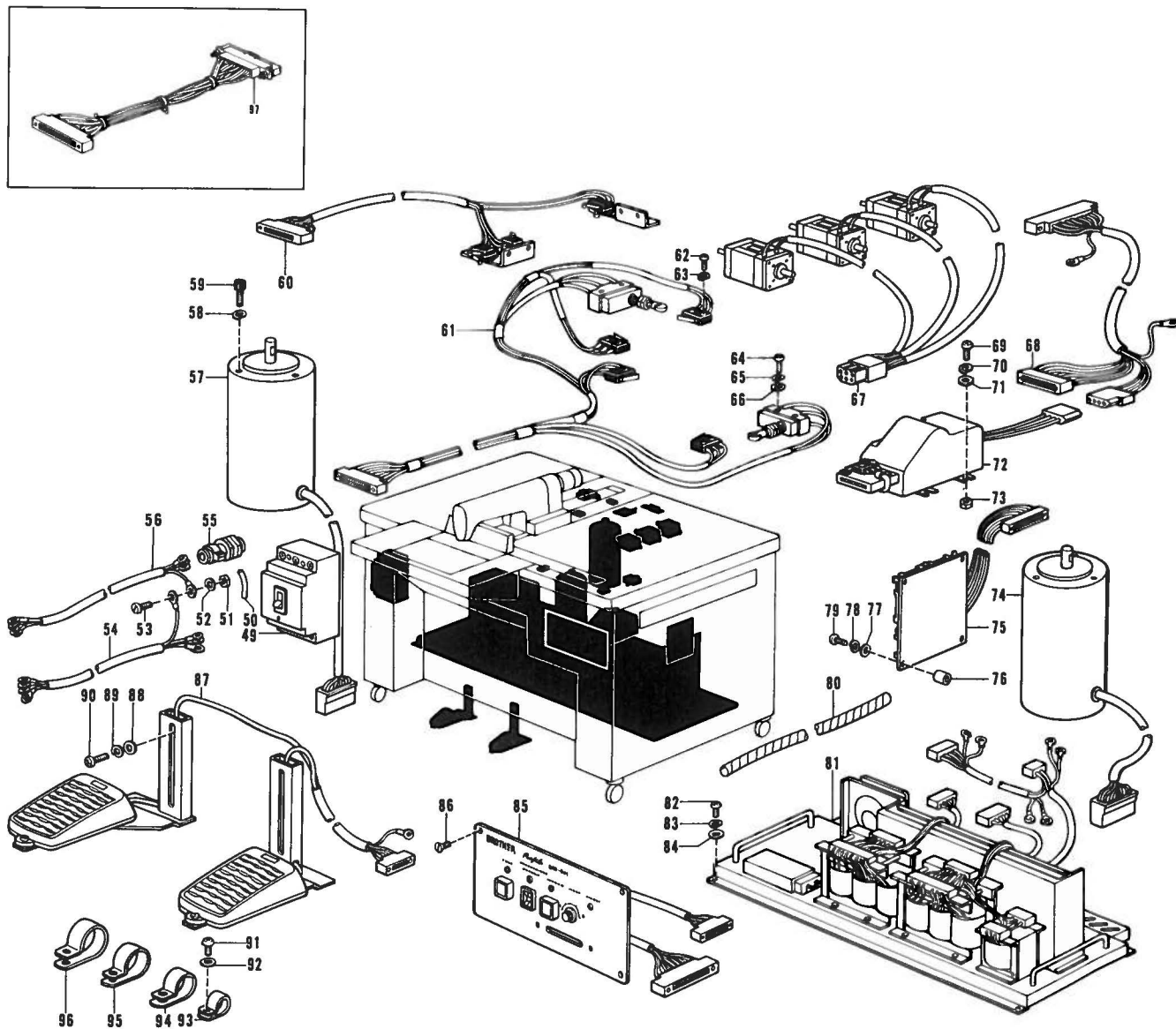
# G. Power Supply Equipment Mechanism (1)

*MOTOR BRUSHED  
157257-0-01*



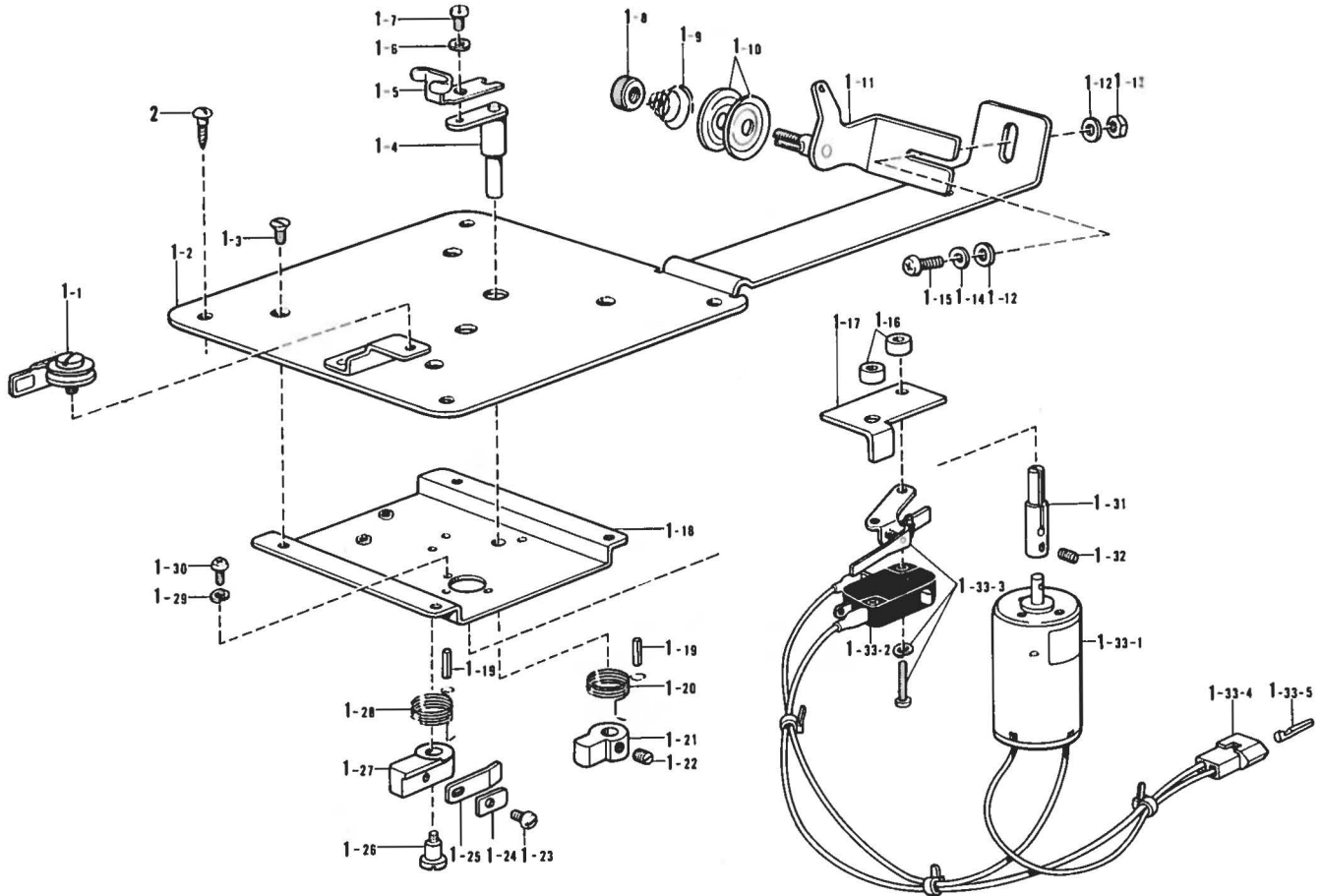
Ref. No.	Name of Parts	Q'ty	Parts No.	Assembly No.	Ref. No.	Name of Parts	Q'ty	Parts No.	Assembly No.
G- 1	Encoder Setting Base	1	152487-1-01		G-25	Screw 4 x 10	6	002401-0-03	
G- 2	Washer 2-4	2	028040-2-43		G-26	Washer 2-4	6	028040-2-43	
G- 3	Screw 4-20	2	007402-0-13		G-27	Washer 4	6	025040-2-33	
G- 4	Set Shaft C	2	152498-0-01		G-28	DD Circuit Board	1	152463-1-01	
G- 5	Set Shaft B	5	152497-0-01		G-29	Screw 3 x 12	2	002301-2-03	
G- 6	Encoder Shaft	1	152488-0-01		G-30	Washer 2-3	2	028030-2-43	
G- 7	Screw 3 x 5	2	014300-5-22		G-31	Washer 3	2	025030-2-33	
G- 8	Encoder Setting Plate	1	152489-0-01		G-32	Circuit Board Supporter 1	2	152452-0-01	
G- 9	Encoder Slit	1	152490-0-01		G-33	Screw 3 x 12	8	002301-2-03	
G-10	Screw 3 x 8	4	002300-8-03		G-34	Washer 2-3	8	028030-2-43	
G-11	Mask D	1	152494-0-00		G-35	Washer 3	8	025030-2-33	
G-12	Mask B	1	152492-0-00		G-36	Fixing Plate	2	152454-0-00	
G-13	Mask A	1	152491-0-00		G-37	Circuit Board Supporter 2	2	152453-0-01	
G-14	Mask C	1	152493-0-00		G-38	Washer 4	6	025040-2-33	
G-15	Screw 2.6 x 3	10	007260-3-13		G-39	Washer 2-4	6	028040-2-43	
G-16	Encoder Assembly	1	152480-0-00		G-40	Screw 4 x 10	6	002401-0-03	
G-17	Screw 3 x 8	2	002300-8-03		G-41	Circuit Board Supporter 1	4	152452-0-01	
G-18	Washer 2-3	3	028030-2-43		G-42	Printed Circuit Board	1	152451-1-00	
G-19	Set Shaft A	3	152496-0-01		G-43	Washer 4	4	025040-2-33	
G-20	Screw 3 x 8	7	002300-8-03		G-44	Washer 2-4	4	028040-2-43	
G-21	Felt	1			G-45	Screw 4 x 10	4	002401-0-03	
G-22	Encoder Cover	1			G-46	PMD Circuit Board	1	152461-0-01	
G-23	Screw 4 x 10	3	007401-0-12		G-47	CNT-PROM Assembly	1	154139-0-00	
G-24	Clock Harness Assembly	1	154036-0-00		G-48	DD-PROM	1	154144-0-00	

## G. Power Supply Equipment Mechanism (2)



Ref. No.	Name of Parts	Q'ty	Parts No.	Assembly No.	Ref. No.	Name of Parts	Q'ty	Parts No.	Assembly No.
G-49	Fuse Breaker B	1	152661-0-00		G-74	Pulse Motor Assembly X	1	152511-0-00	
G-50	Tube	1			G-75	Extension Board	1	152499-0-01	
G-51	Nut 4	1	021400-1-03		G-76	Spacer A	4	152544-0-00	
G-52	Washer 2-4	1	028040-2-43		G-77	Washer 3	4	025030-2-33	
G-53	Screw 4 x 8	1	007400-8-13		G-78	Washer 2-3	4	028030-2-43	
G-54	Cable Assembly B	1			G-79	Screw 3 x 16	4	002301-6-05	
G-55	Bushing	1			G-80	Spiral Tube B	1		
G-56	Cable Assembly A	1			G-81	Power Supply Equipment Assembly B	1	152659-0-01	
G-57	Pulse Motor Assembly Y	1	152512-0-00		G-82	Screw 4 x 10	6	002401-0-03	
G-58	Washer 2-8	6	028080-2-42		G-83	Washer 2-4	6	028040-2-43	
G-59	Bolt 8 x 20	6	018082-0-22		G-84	Washer 4	6	025040-2-33	
G-60	Synchronizer Switch Assembly	1	152437-2-00		G-85	Switch Board Assembly B	1	152654-1-01	
G-61	Micro Switch Assembly	1	152440-0-01		G-86	Screw 4 x 7	3	004400-7-02	
G-62	Screw 2 x 10	8	001021-0-16		G-87	Foot Switch Assembly	1	152433-1-01	
G-63	Washer 2-2	8	028020-2-43		G-88	Washer 4	2	025040-2-32	
G-64	Screw 4 x 25	4	002402-5-12		G-89	Washer 2-4	2	028040-2-42	
G-65	Washer 2-4	4	028040-2-42		G-90	Screw 4 x 25	2	002402-5-12	
G-66	Washer 4	4	025040-2-32		G-91	Screw 4 x 10	32	002401-0-03	
G-67	Clamp Motor Assembly	1	152444-1-01		G-92	Washer 4	32	025040-2-33	
G-68	Reader Harness Assembly	1	152446-0-01		G-93	Cord Holder #6	12	525664-0-00	
G-69	Screw 4 x 10	4	002401-0-03		G-94	Cord Holder #9	5	525907-0-00	
G-70	Washer 4 x 10	4	028040-2-43		G-95	Cord Holder #12	5	554482-0-00	
G-71	Washer 4	4	025040-2-33		G-96	Cord Holder #14	10	552908-0-00	
G-72	Card Reader	1	152500-0-00		G-97	Programmer Harness Assembly A	1	152556-1-00	
G-73	Nut 4	4	021400-1-03						

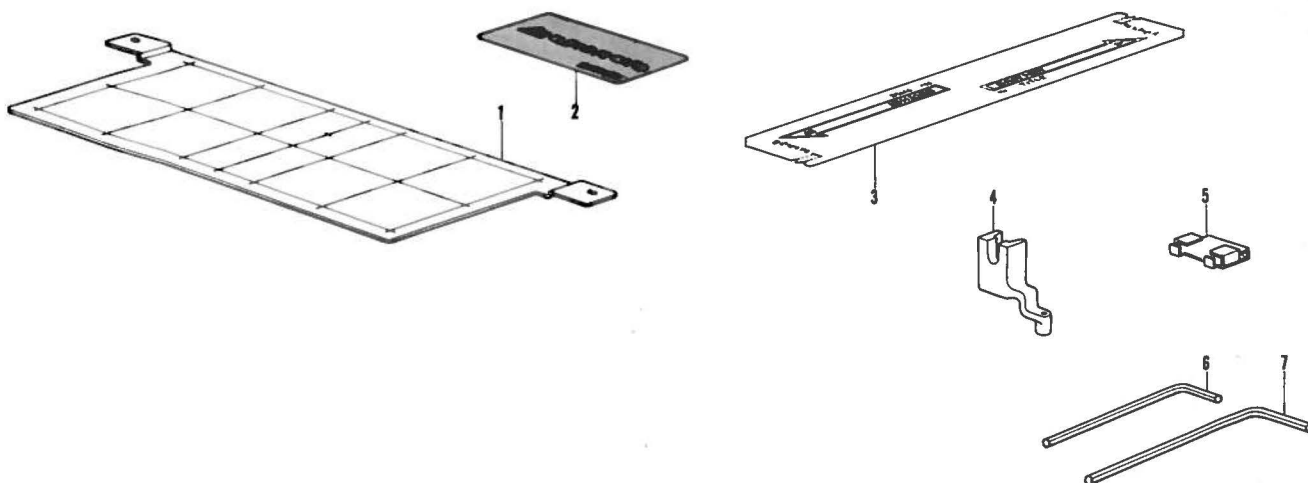
# H. Winder Mechanism



Ref. No.	Name of Parts	Q'ty	Parts No.	Assembly No.	Ref. No.	Name of Parts	Q'ty	Parts No.	Assembly No.
H-1- 1	Thread Trimmer Assembly	1	146197-0-01	H-1 Bobbin Winder Assembly 152651-1-01	H-1-20	Spring B	1	152360-0-01	H-1-33 Motor Assembly 152505-0-01
H-1- 2	Bobbin Winder Wheel Bracket	1			H-1-21	Bobbin Winder Claw	1	154092-0-01	
H-1- 3	Screw 3 x 5	4	004300-5-13		H-1-22	Screw 4.37 x 5	2	013680-5-12	
H-1- 4	Bobbin Holder Arm	1	154024-0-01		H-1-23	Screw 3.18 x 5	1	001660-5-12	
H-1- 5	Bobbin Presser Plate	1	152645-0-01		H-1-24	Washer	1	111943-0-01	
H-1- 6	Washer 3	1	025030-2-33		H-1-25	Spring	1	111942-0-01	
H-1- 7	Screw 3 x 6	1	007300-6-13		H-1-26	Screw	1	152362-0-01	
H-1- 8	Nut	1	100136-0-01		H-1-27	Lever	1	152361-0-01	
H-1- 9	Tension Spring	1	100401-0-01		H-1-28	Spring A	1	152363-0-01	
H-1-10	Tension Disc	2	145446-0-01		H-1-29	Washer 2-3	3	028030-2-42	
H-1-11	Bobbin Winder Guide Bracket Assembly	1	145571-0-01		H-1-30	Screw 3 x 6	3	002300-6-13	
H-1-12	Washer	2	025040-2-33		H-1-31	Bobbin Winder	1	152358-0-01	
H-1-13	Nut 4	1	021400-1-03		H-1-32	Screw 3 x 3	2	014300-3-22	
H-1-14	Washer 2-4	1	028040-2-43		H-1-32-1	Motor	1	152506-0-00	
H-1-15	Screw 4 x 10	1	002401-0-03		H-1-32-2	Micro Switch	1		
H-1-16	Collar	2	152364-0-01		H-1-32-3	Actuator	1		
H-1-17	Stopper	1	154093-1-01		H-1-32-4	Nylon Connector	1		
H-1-18	Motor Setting Plate	1			H-1-32-5	Terminal Pin	2	552851-0-01	
H-1-19	Spring Pin	2			H-2	Screw 3.1 x 13	5	031311-3-06	



## Z. Accessories · Accessories Set



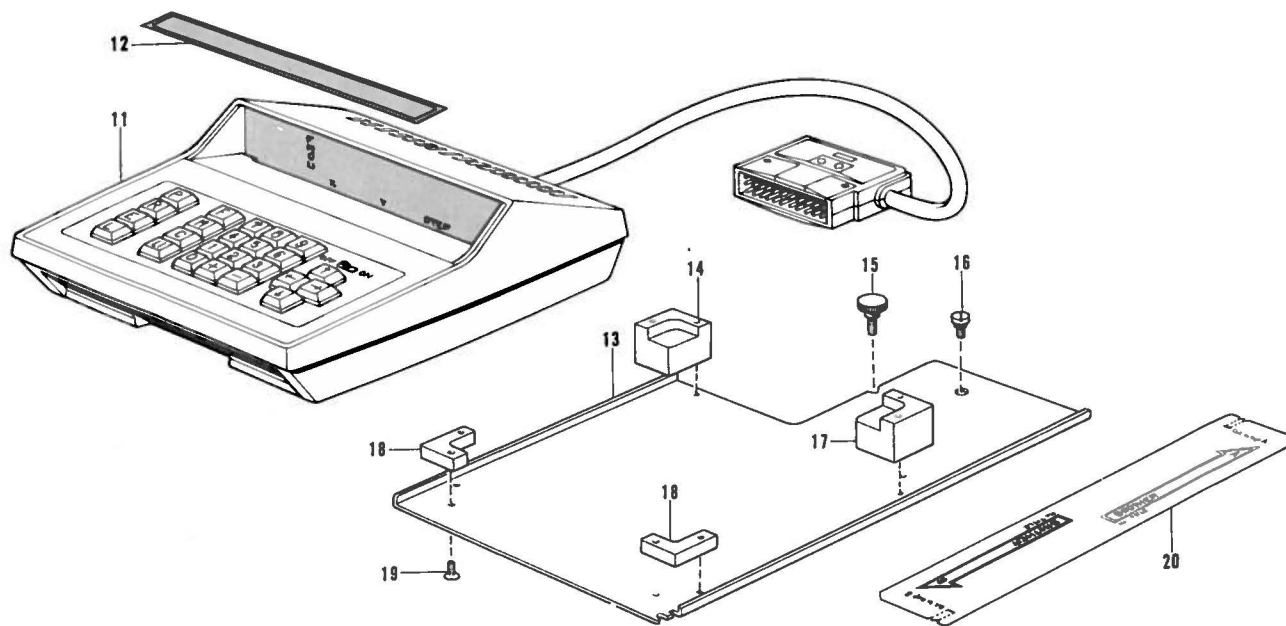
Ref. No.	Name of Parts	Q'ty	Parts No.	Assembly No.	Ref. No.	Name of Parts	Q'ty	Parts No.	Assembly No.
Z- 1	Standard Plate		152515-1-01		Z- 5	Presser Plate Supporter		154041-1-01	
Z- 2	Cleaning Card		152598-0-00		Z- 6	Wrench 2.5		154125-0-01	
Z- 3	Memory Card		152599-0-00		Z- 7	Wrench 3		142721-0-01	
Z- 4	Presser Foot A		152283-1-01						

\*The details of included accessories are subject to change.

\*Les détails des accessoires inclus sont sujets à des changements.

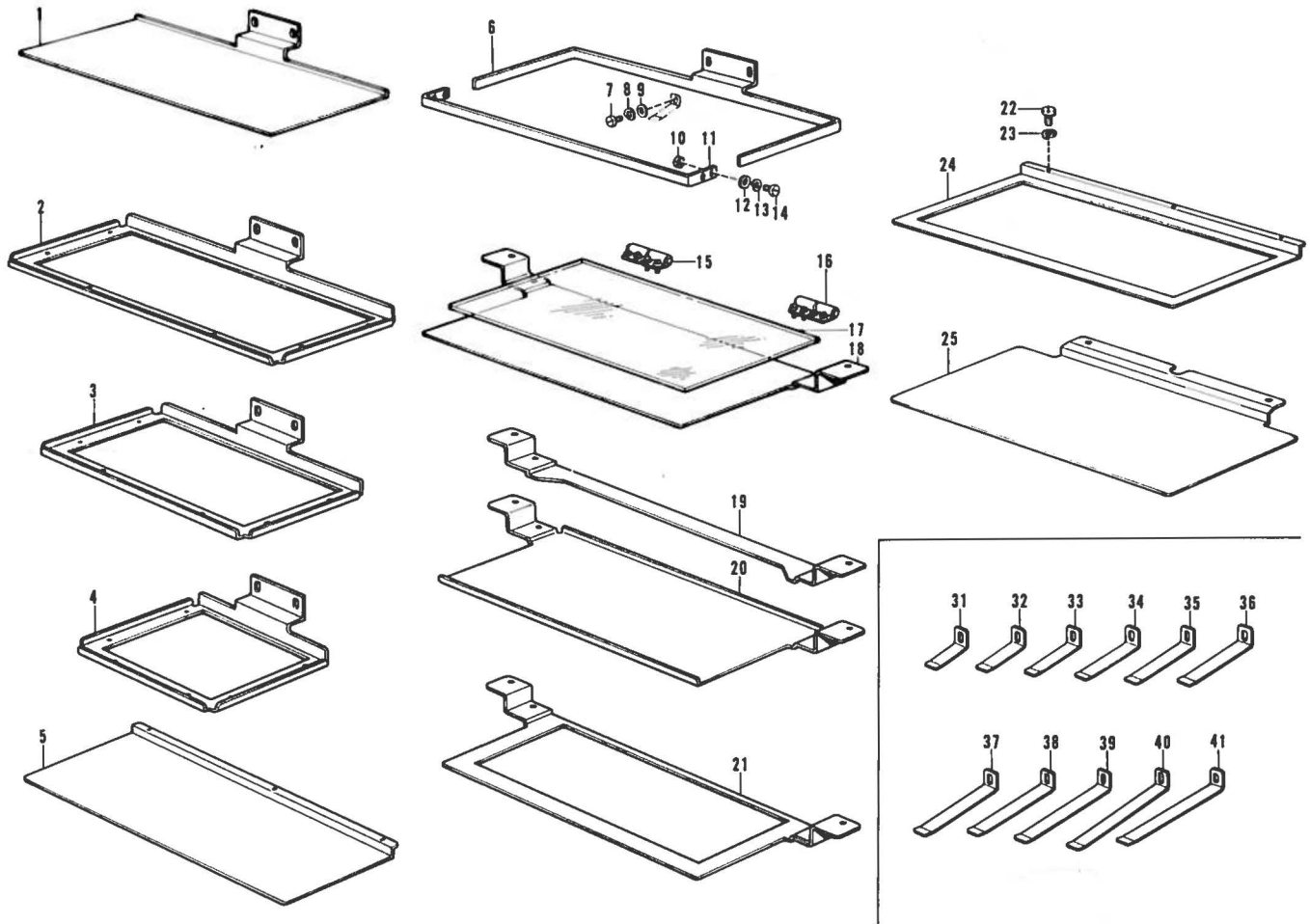
\*Änderungen in der Aufstellung der mitgelieferten Zubehöre sind vorbehalten.

\*Los detalles de los accesorios incluidos pueden variar.



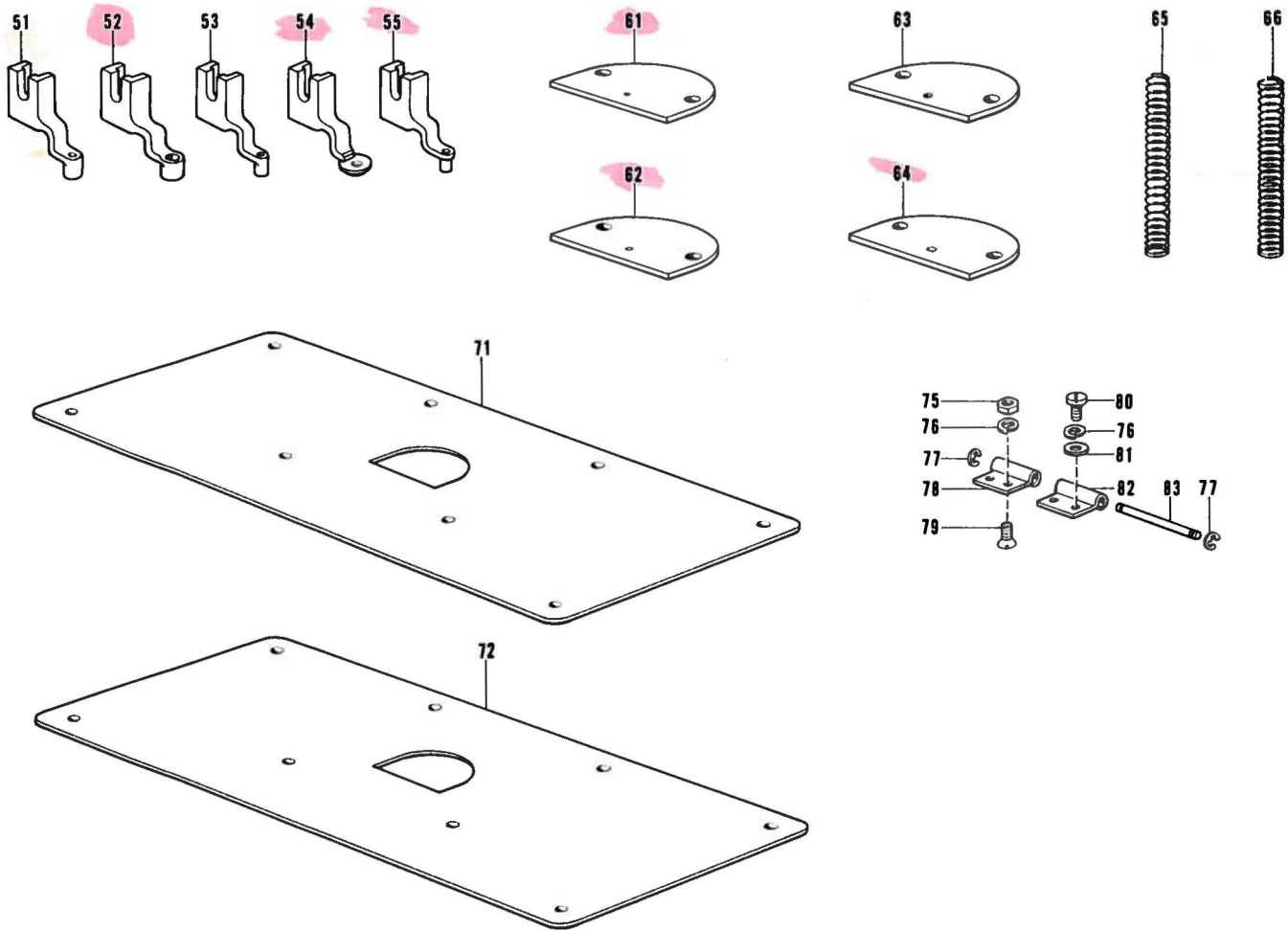
Ref. No.	Name of Parts	Q'ty	Parts No.	Assembly No.	Ref. No.	Name of Parts	Q'ty	Parts No.	Assembly No.
Z-11	Programmer	1	152514-1-01		Z-16	Table Hinge	1	152589-0-01	
Z-12	Label	1	154077-0-01		Z-17	Cradle (BR)	1	152588-0-00	
Z-13	Programmer Table	1	152585-1-01		Z-18	Cradle (F)	2	152586-0-00	
Z-14	Cradle (BL)	1	152587-0-00		Z-19	Screw 4 x 7	8	004400-7-02	
Z-15	Screw	2	152590-0-01		Z-20	Memory Card	20	152599-0-00	

## a. Optional Parts (1)



Ref. No.	Name of Parts	Q'ty	Parts No.	Assembly No.	Ref. No.	Name of Parts	Q'ty	Parts No.	Assembly No.
a-1	Presser Plate (Tacking type)	1	152630-0-01		a-19	Cassette	1	154071-1-01	
a-2	Presser Plate 250 x 105	1	154117-0-01		a-20	Cassette Presser (Lower) B	1	154091-1-01	
a-3	Presser Plate 175 x 105	1	154118-0-01		a-21	Cassette Presser (Lower) C	1	154120-1-01	
a-4	Presser Plate 105 x 105	1	154119-0-01		a-22	Screw 3 x 8	3	007300-8-03	
a-5	Feed Plate A	1	152631-0-01		a-23	Washer 2-3	3	028030-2-43	
a-6	Presser Frame (Rear)	1	152623-0-01		a-24	Feed Plate A	1	152282-1-01	
a-7	Screw 3 x 5	11	001300-5-03		a-25	Feed Plate B	1	154129-0-01	
a-8	Washer 2-3	11	028030-2-43		a-31	Presser Plate Spring 25	1	152612-0-01	
a-9	Washer 3	11	025030-2-33		a-32	Presser Plate Spring 30	1	152617-0-01	
a-10	Nut 4	4	021400-1-03		a-33	Presser Plate Spring 35	1	152613-0-01	
a-11	Presser Frame (Front)	1	152622-1-01		a-34	Presser Plate Spring 40	1	152618-0-01	
a-12	Washer 4	4	025040-2-33		a-35	Presser Plate Spring 45	1	152614-0-01	
a-13	Washer 2-4	4	028040-2-43		a-36	Presser Plate Spring 50	1	152619-0-01	
a-14	Screw 4 x 8	4	007400-8-13		a-37	Presser Plate Spring 55	1	152626-0-01	
a-15	Hinge Set Left	1	152633-0-01		a-38	Presser Plate Spring 60	1	152615-0-01	
a-16	Hinge Set Right	1	152632-0-01		a-39	Presser Plate Spring 65	1	152620-0-01	
a-17	Cassette Presser (Upper)	1	152625-0-00		a-40	Presser Plate Spring 70	1	152621-0-01	
a-18	Cassette Presser (Lower) A	1	152624-1-01		a-41	Presser Plate Spring 75	1	152616-0-01	

## a. Optional Parts (2)



Ref. No.	Name of Parts	Q'ty	Parts No.	Assembly No.	Ref. No.	Name of Parts	Q'ty	Parts No.	Assembly No.
a-51	Presser Foot A (Hole 2.5φ)	1	152283-1-01		a-71	Needle Plate SUS	1	152255-0-00	
a-52	Presser Foot B (Hole 4φ)	1	152636-0-01		a-72	Needle Plate B	1	154075-0-00	
a-53	Presser Foot C (Hole 2φ)	1	152637-0-01		a-75	Nut 3	2	021300-1-03	
a-54	Presser Foot D (Hole 3φ)	1	154069-0-01		a-76	Washer 2-3	4	028030-2-43	
a-55	Presser Foot E (Hole 1.6φ)	1	154089-0-01		a-77	Stop Ring E2	2	048020-3-42	
a-61	Needle Plate 14	1	154104-0-01		a-78	Hinge A	1	152627-0-01	
a-62	Needle Plate 18	1	154105-0-01		a-79	Screw 3 x 6	2	003300-6-04	
a-63	Needle Plate 22	1	152256-0-01		a-80	Screw 3 x 5	2	001300-5-03	
a-64	Needle Plate 26	1	154127-0-01		a-81	Washer 3	2	025030-1-33	
a-65	Spring A (Weak)	1	152254-0-01		a-82	Hinge B	1	152628-0-01	
a-66	Spring B (Strong)	1	152641-0-01		a-83	Hinge Shaft	1	152629-0-01	

# I N D E X

Parts No.	Ref. No.	Remark	Parts No.	Ref. No.	Remark	Parts No.	Ref. No.	Remark	Parts No.	Ref. No.	Remark
001021-0-16	G-62		007400-8-12	C-16		018401-0-22	C-13		025040-2-32	G-66	
001300-5-03	a- 7			D-32			D-96			G-88	
	a-80			E- 7			F-33		025040-2-33	B-10	
001660-5-12	H- 1-23		007400-8-13	B- 8			F-43			B-14-27	
002300-6-13	H- 1-30			B-34		018401-2-22	D-90			E- 4	
002300-8-03	G-10			C- 4			D-91			E-13	
	G-17			C- 6			F-44			E-18	
	G-20			C-26		018401-6-22	C-22			E-26	
002301-2-03	G-29			E- 2			D-30			E-30	
	G-33			E-20			F-20			E-54	
002301-6-05	G-79			E-28		018403-0-22	B-14-33			E-65	
002303-0-06	E-36			E-32		018404-5-22	E-92			G-27	
002401-0-03	E-43			E-56			E-109			G-38	
	G-25			E-67		018501-2-22	D- 6			G-43	
	G-40			G-53			D-15			G-48	
	G-45			a-14			D-67			G-71	
	G-69		007401-0-12	A-43			D-72			G-84	
	G-82			C-10			E-131			G-92	
	G-91			D-48			F- 4			H- 1-12	
	H- 1-15			E-10			F-38			a-12	
002402-5-12	G-64			E-15		018501-6-22	D- 2		025050-2-32	E-112	
	G-90			E-35			D-23			E-133	
003300-6-04	C-28- 3			E-148			D-27			F- 2	
	C-28- 9			E-159			E-145		025260-1-33	B-26- 3	
	a-79			G-23		021060-1-02	D-44		028020-2-43	G-63	
003300-8-12	B-14- 4		007401-4-12	B-14- 6		021160-3-03	E-51		028030-2-42	A- 3	
	F-95			D-21		021300-1-03	B-14-23			A-48	
	E-101			D-34			B-29			D-58	
003400-8-04	E-24			D-56			E-41			D-77	
004300-5-13	H- 1- 3		007401-4-13	D-11			E-68			D-80	
004400-7-02	G-86			D-65			E-80			D-83	
	Z-19		007402-0-13	B-14- 7			a-75			D-101	
007260-3-13	G-15			B-18		021400-1-03	B-14- 8			E-99	
007260-6-12	A- 4			B-40			B-14-16			F-25	
	B-26-11			G- 3			B-14-29			F-29	
007260-6-13	B-26- 1		007402-5-12	F-16			B-14-34			H- 1-29	
	B-26-14		007402-5-13	B-13			B-36		028030-2-43	A-14	
007300-4-12	C-28- 8		007403-5-12	D-46			B-48			A-21	
007300-4-13	B-41		007671-2-12	C-29			D- 8			B- 3	
	B-44		009681-0-12	D-62			D-38			B-14-14	
	B-55			D-86			D-45			B-14-22	
	B-58		009761-6-12	A-12			F-11			B-42	
007300-6-13	A-47		013680-5-12	H- 1-22			F-18			B-45	
	D-57		014300-3-22	H- 1-32			F-47			B-56	
	D-88- 3		014300-5-22	G- 7			G-51			B-59	
	E-49		014400-5-22	F-24			G-73			C-35	
007300-8-03	A-15		014400-8-22	B-47			H- 1-13			E-37	
	B-14-13			D- 9			a-10			E-46	
	C-34		014501-2-20	A- 6		025030-1-33	a-81			E-61	
	E-62		014770-6-22	A- 8		025030-2-32	D-59			E-64	
	H- 1- 7		017762-0-13	A-27			D-100			E-69	
	B- 4		018082-0-22	G-59			E-98			G-18	
007300-8-03	D-14- 6		018102-0-22	E-116			F-30			G-30	
	D-94- 2			E-123		025030-2-33	B-14-21			G-34	
	E-63			E-142			E-47			G-78	
	E-73		018103-0-22	E-134			E-60			a- 8	
	a-22			E-137			E-70			a-23	
007301-0-12	D-78			E-153			E-79			a-76	
	D-81			E-154			G-31		028040-2-42	A-42	
	D-82		018105-0-22	D-24			G-35			A-55	
	D-102		018300-8-22	F-26			G-77			B-14- 5	
007301-2-12	E-100			F-28			H- 1- 6			B-14-11	
007302-0-13	A-20		018400-8-22	B-14-30			a- 9			B-14-31	
	B-28			F- 7		025040-2-32	B-14-12			B-20	
	E-45			F-10			C-15			C-11	
	F-48			F-35			D-19			C-14	
007400-6-13	E-11			F-51			E-93			C-17	
	E-74			F-54			E-110			C-21	
007400-7-13	B-49		018401-0-22	B-14-10			F- 5			D-20	
007400-8-12	A-54			B-19			F-31			D-31	

Parts No.	Ref. No.	Remark	Parts No.	Ref. No.	Remark	Parts No.	Ref. No.	Remark	Parts No.	Ref. No.	Remark	
028040-242	D-35		028060-242	D-74		152257-0-01	A-41		152361-0-01	H- 1-27		
	D-47		028080-242	G-58		152258-1-01	A-51		152362-0-01	H- 1-26		
	D-55		028100-242	D-25		152259-1-01	A-40		152363-0-01	H- 1-28		
	D-89			E-117		152260-0-01	A-56		152364-0-01	H- 1-16		
	D-92			E-122		152268-0-01	B-14-18		152369-0-01	F-23		
	D-97			E-135		152269-0-01	B-14-19		152370-0-00	F-22		
	E- 6			E-138		152270-0-01	B-14- 1		152371-0-01	F-19		
	E- 9			E-141		152271-0-01	B-14-24		152372-0-01	F-50		
	E-34			E-152		152272-0-01	B-14-25		152374-0-01	F-41		
	E-149			E-155		152273-0-01	B-14-15		152375-0-01	F-34		
	E-158		028260-242	B-26-10		152274-1-01	B-11		152378-0-01	F-17		
	F- 6		028260-243	B-26- 2		152275-0-01	B-16		152379-0-01	F-57		
	F- 9			B-26-13		152276-1-01	B-15		152380-0-01	F-37		
	F-15		028350-242	C-30		152277-0-01	B-14-20		152381-1-01	F-14		
	F-21		028680-242	A-45		152280-1-01	B- 6		152382-1-01	F-13		
	F-32			A-52		152282-1-01	a-24		152383-2-01	A- 9		
	F-36			D-61		152283-1-01	B- 7		152389-0-01	A- 5		
	F-42			D-87			Z- 4		152393-0-00	E-52		
	F-45		031311-3-02	E-87			a-51		152418-0-01	E-21		
	F-52			E-90		152284-0-00	A-17		152423-0-00	E-59		
	F-55			E-107		152285-0-01	A-31		152433-1-01	G-87		
	G-65			E-115		152286-0-01	A-32		152437-2-00	G-60		
	G-89			E-121		152287-0-01	A-30		152440-0-01	G-61		
	028040-243	B- 9		E-124		152290-0-01	A-22		152444-1-01	G-67		
		B-12		E-128		152291-1-01	D-26		152446-0-01	G-68		
		B-14-17		031311-3-06	H- 2		152296-0-01	D- 4		152451-1-00	G-42	
		B-14-28		031452-5-02	E-147		152297-0-01	D-69		152452-0-01	G-32	
		B-14-35		033311-3-02	E-126		152299-0-00	C- 9- 4			G-41	
		B-17			E-144			C-28- 6		152453-0-01	G-37	
		B-35		048020-3-42	C- 9- 2			D-14- 2		152454-0-00	G-36	
		B-39			C-28- 5			D-94- 4		152461-0-01	G-46	
		B-50			D-14- 1		152300-0-01	D-14- 3		152463-1-01	G-28	
		C- 3			D-94- 5		152301-0-01	D-14- 5				
		C- 7			a-77		152302-0-01	D-18		152480-0-00	G-16	
		C-27		048030-3-42	B-14-26		152303-1-01	D- 7		152487-1-01	G- 1	
D-10				B-54		152304-1-01	D-64		152488-0-01	G- 6		
D-66			048040-3-42	D-88- 4		152305-0-00	D-13		152489-0-01	G- 8		
E- 3			048050-3-42	B-14-36- 4		152307-0-00	D-17		152490-0-01	G- 9		
E-12			081007-0-70	A-19		152308-1-00	D-70		152491-0-00	G-13		
E-16			100022-0-04	A-37		152309-0-01	D-41		152492-0-00	G-12		
E-19			100032-0-03	A-57		152310-0-01	D-40		152493-0-00	G-14		
E-27			100136-0-01	H- 1- 8		152311-0-01	D-39		152494-0-00	G-11		
E-31			100401-0-01	H- 1- 9		152312-0-01	D-37		152496-0-01	G-19		
E-44			100463-0-01	A-29		152313-0-01	D-36		152497-0-01	G- 5		
E-55			102424-0-03	A-44		152314-0-01	D-50		152498-0-01	G- 4		
E-66				A-53		152315-0-01	D-52		152499-1-01	G-75		
E-75			104885-0-01	A-36		152316-0-01	D-51		152500-0-00	G-72		
G- 2			109714-0-00	E-85		152326-0-01	D-88- 2		152505-0-01	H- 1-33		
G-26			111865-0-01	E-113		152327-0-00	D-88- 5		152506-0-00	H- 1- 33- 1		
G-39			111942-0-01	H- 1-25		152333-0-01	C-28- 7		152511-0-00	G- 74		
G-44			111943-0-01	H- 1-24			D-94- 3		152512-0-00	G-57		
G-52			140518-0-01	A-18		152334-0-01	C-28- 4		152514-1-01	Z-11		
G-70			142721-0-01	Z- 7			D-94- 6		152515-1-01	Z- 1		
G-83			143882-0-01	E-86		152335-0-00	D-95		152544-0-00	E-48		
H- 1-14			143910-0-01	E-84		152336-0-01	D-99			G-76		
a-13			145446-0-01	H- 1-10		152338-0-01	C- 1		152545-0-00	A-23		
028050-242		D- 1		145571-0-01	H- 1-11		152339-0-01	C- 2		152575-0-00	E-23	
		D- 5		146037-0-01	A-34		152340-1-01	C-18		152580-0-01	E-97	
	D-16		146039-0-01	A-28		152342-1-01	C-40		152581-0-01	E-96		
	D-28		146040-0-01	A-16		152344-0-01	C-28-10		152584-0-01	E-17		
	D-68		146069-0-01	A-33		152345-0-01	C-28- 2		152585-1-01	Z-13		
	D-71		146197-0-01	H- 1- 1		152346-1-01	C-31		152586-0-00	Z-18		
	E-132		146293-0-01	A-26		152348-0-01	C-25		152587-0-00	Z-14		
	E-146		146367-0-01	A-35		152349-1-01	C- 5		152588-0-00	Z-17		
	F- 3		147141-0-01	A-38		152350-1-01	C- 8		152589-0-01	E-103		
	F-39		152254-0-01	a-65		152351-1-01	C-12			Z-16		
	028060-242	A-11		152255-0-00	A-58		152353-0-01	C- 9- 3		152590-0-01	E-102	
		A-39			a-71		152355-1-01	C-33			Z-15	
		C-24		152256-0-01	A-59		152358-0-01	H- 1-31		152593-0-00	A- 7	
		D-43			a-63		152360-0-01	H- 1-20		152598-0-00	Z- 2	

Parts No.	Ref. No.	Remark	Parts No.	Ref. No.	Remark	Parts No.	Ref. No.	Remark	Parts No.	Ref. No.	Remark
152599-0-00	Z- 3		154071-1-01	a-19							
	Z-20		154075-0-00	a-72							
152611-0-00	D-12		154077-0-01	Z-12							
152612-0-01	a-31		154089-0-01	a-55							
152613-0-01	a-33		154090-0-01	F-49							
152614-0-01	a-35		154091-1-01	a-20							
152615-0-01	a-38		154092-0-01	H- 1-21							
152616-0-01	a-41		154093-1-01	H- 1-17							
152617-0-01	a-32		154094-0-01	D-22							
152618-0-01	a-34		154097-0-00	E-40							
152619-0-01	a-36										
152620-0-01	a-39		154104-0-01	a-61							
152621-0-01	a-40		154105-0-01	a-62							
152622-1-01	a-11		154108-0-01	B-14-36- 3							
152623-0-01	a- 6		154109-0-01	B-14- 2							
152624-1-01	a-18		154110-0-01	B-14-32							
152625-0-00	a-17		154111-0-01	B-14- 9							
152626-0-01	a-37		154112-0-01	B-14- 3							
152627-0-01	a-78		154113-0-01	C-23							
152628-0-01	a-82			D-73							
152629-0-01	a-83		154117-0-01	a- 2							
152630-0-01	a- 1		154118-0-01	a- 3							
152631-0-01	a- 5		154119-0-01	a- 4							
152632-0-01	a-16		154120-1-01	a-21							
152633-0-01	a-15		154124-0-01	F-27							
152634-0-01	A-46		154125-0-01	Z- 6							
152635-0-01	A-50		154127-0-01	a-64							
152636-0-01	a-52		154129-0-01	a-25							
152637-0-01	a-53		154131-0-01	B-14							
152641-0-01	A-60		154132-0-01	B-14-36							
	a-66		154133-0-01	B-26							
152642-0-01	D-88- 6		154139-0-00	G-47							
152643-0-01	C-19		154144-0-00	G-48							
152644-0-01	C-20		525664-0-00	G-93							
152645-0-01	H- 1- 5		525907-0-00	G-94							
152651-1-01	H- 1		552851-0-01	H- 1-33- 5							
152652-0-01	D-14		552908-0-00	G-96							
152654-1-01	G-85		554482-0-00	G-95							
152659-0-01	G-81										
152661-0-00	G-49		152282-1-01	B-1							
152670-0-01	C-28		152556-1-00	G-97							
152671-0-01	C- 9										
152673-0-01	D-94										
154004-0-01	E-83										
154008-0-01	D-88										
154023-0-00	C-37										
154024-0-01	H- 1- 4										
154034-0-00	E-39										
154036-0-00	G-24										
154041-1-01	B-25										
	Z- 5										
154044-1-01	B-26- 4										
154050-0-01	B-26-12										
154051-0-01	B-30										
154052-0-01	B-33										
154053-0-01	B-31										
154054-0-01	B-32										
154055-0-01	B-27										
154056-0-01	B-38										
154057-0-01	B-37										
154058-0-01	B-51										
154059-0-01	B-52										
154060-0-01	B-53										
154061-0-01	B-57										
154062-0-01	B-46										
154065-0-01	B-62										
154066-0-00	B-61										
154067-0-01	F-46										
154069-0-01	a-54										
154070-0-01	C-38										